

Town of Nottingham New Hampshire



Conservation Overlay District

Proposed

Legend

Conservation Focus Areas

- Core
- Supporting Landscape

Wildlife Focus Areas

- Core
- Supporting Landscape
- Streams, Brooks, etc.
- Apparent Wetland Limit
- Lakes, Ponds, Rivers
- Wetlands

Political Features

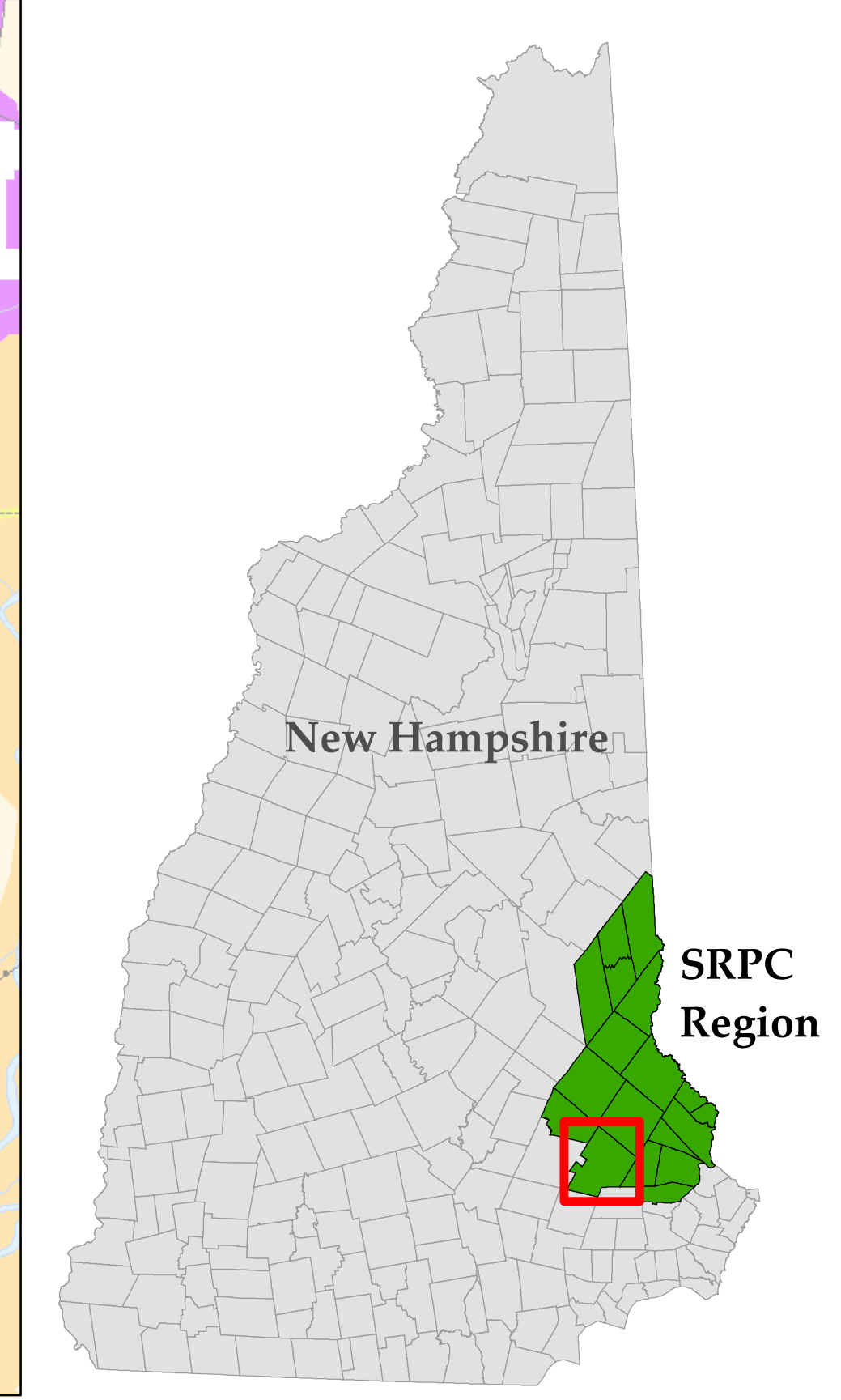
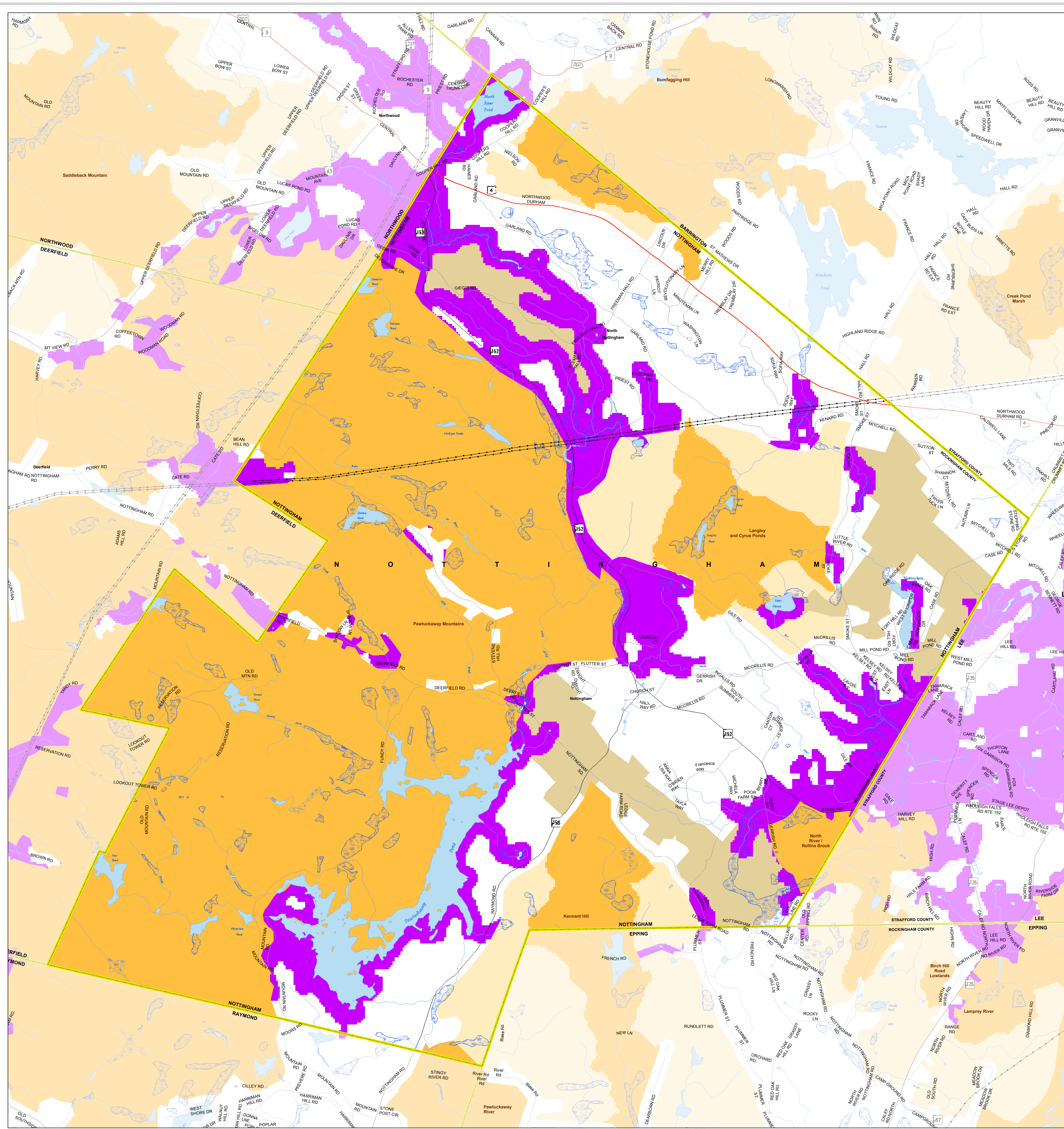
- Municipal Boundary

Transportation Features

- ##### Roads by RSA Class
- Class I Trunk Line Highway
 - Class II State Aid Highway
 - Town Roads/Rural Highways

Miscellaneous

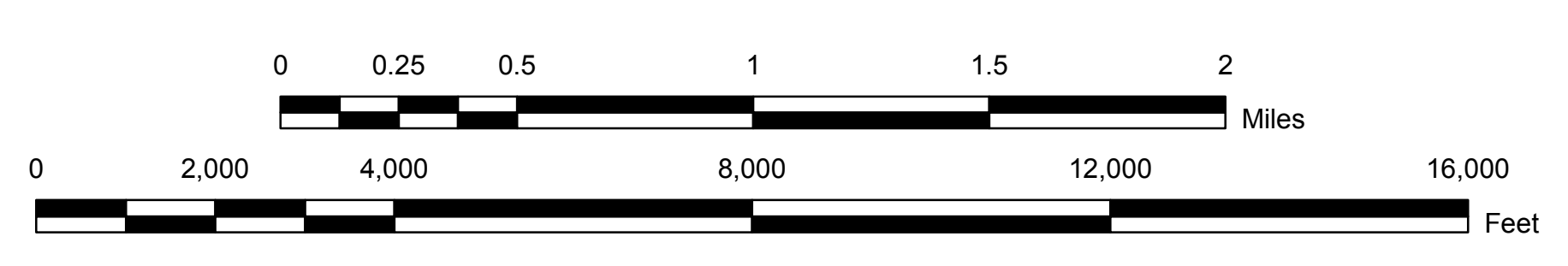
- Transmission Lines
- Railroad Tracks



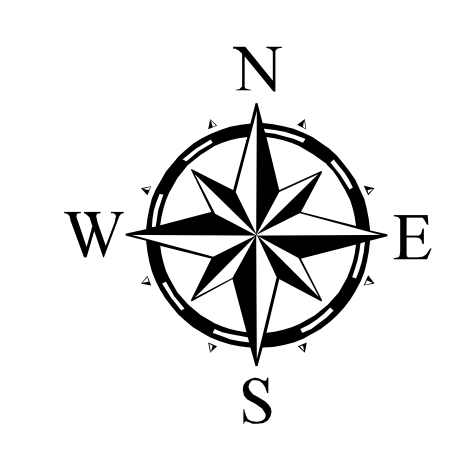
Prepared by **Stafford Regional Planning Commission**
 2 Ridge Street, Suite 4, Dover, NH 03820
 T: (603) 742-2523 F: (603) 742-7986 em: srpc@stafford.org
 Nottingham Conservation Map
 Date/Author: January 2008 // DEA
 Path/G: Requests\Members\Nottingham\Nottingham_Conland.mxd
 Printed: January 14, 2008



DATA SOURCES
 Conservation Lands data taken from the archives of NH GRANIT (January 2007) with updates by SRPC. Data from SRPC represents recent conservation/public land that yet to be entered into the archives of GRANIT.
 Digital road centerlines provided by NHDOT and are archived in the GRANIT database. SRPC makes no claim to the validity of the data. SRPC and NHDOT are aware that certain road names are out of date. SRPC would like to be made aware of any street names that are no longer valid.
 Wildlife Action Plan Focus Areas (Displayed in Dark Purple) were provided by NH Fish and Game.
 Conservation Focus Areas provided by The Nature Conservancy as a product of The Land Conservation Plan for New Hampshire's Coastal Watershed.



1:22,000



GRID NORTH
 NH STATE PLANE COORDINATES
 NAD 1983 (feet)

