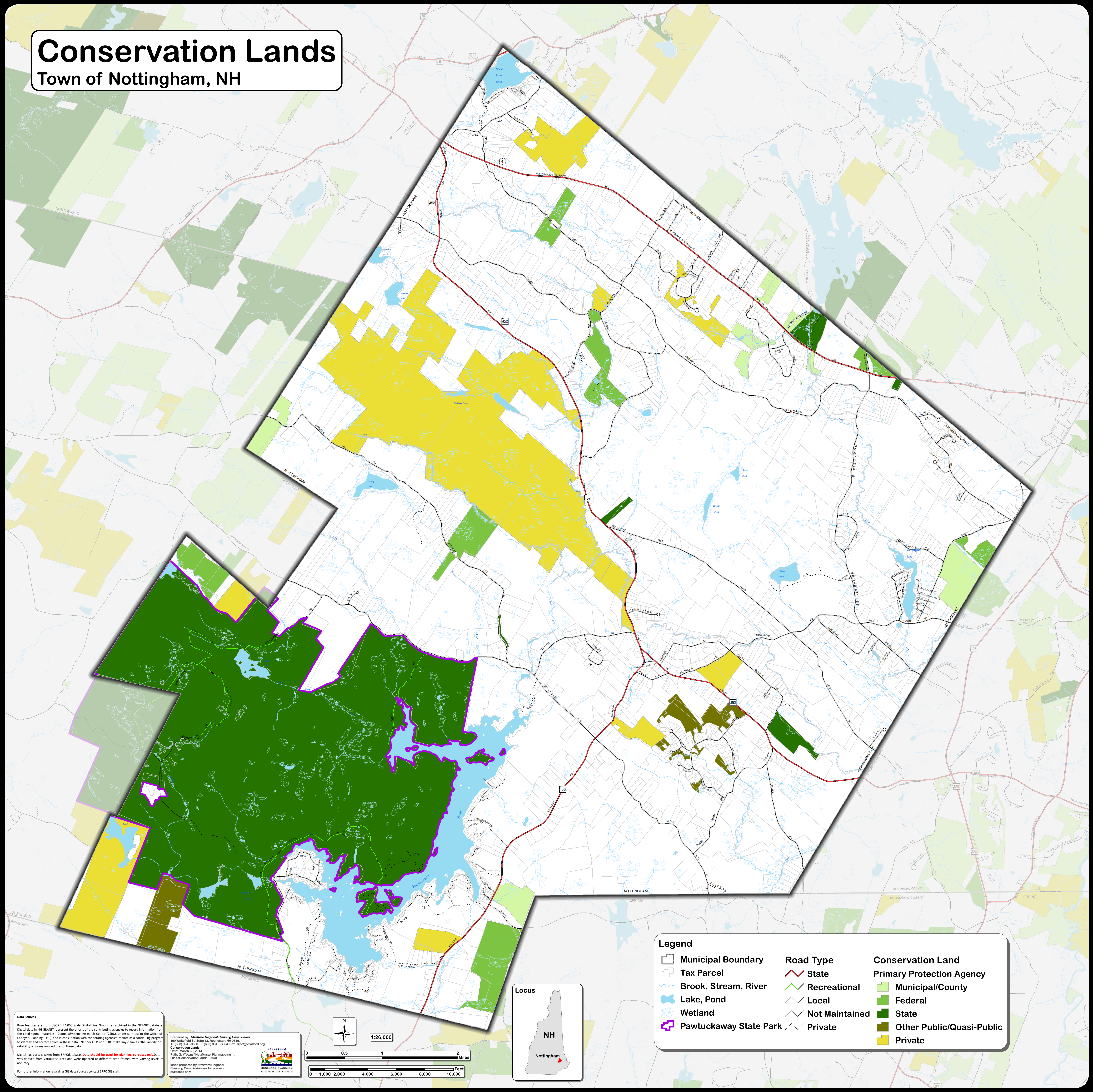


Conservation Lands

Town of Nottingham, NH



Data Sources

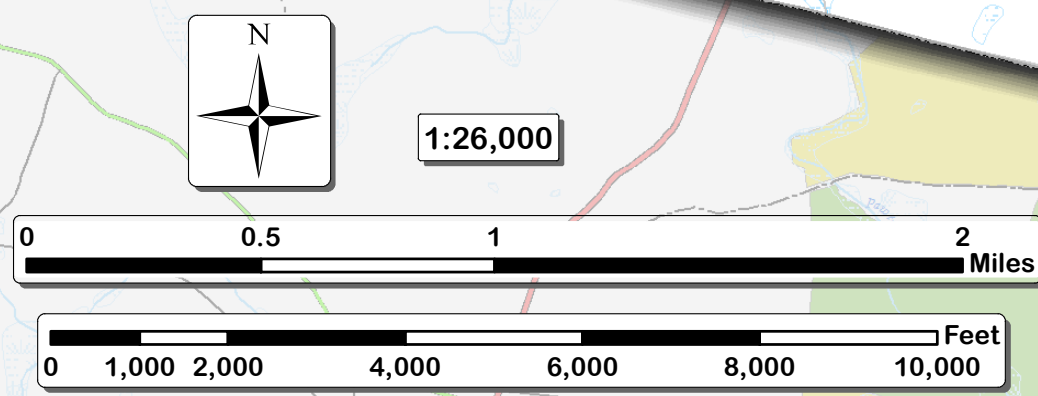
Base features are from USGS 1:24,000 scale Digital Line Graphs, as archived in the GRANIT database. Digital data in NH GRANIT represent the efforts of the contributing agencies to record information from the cited source materials. ComplexSystems Research Center (CSRC), under contract to the Office of Energy & Planning (OEP), and in consultation with cooperating agencies, maintains a continuing program to identify and correct errors in these data. Neither OEP nor CSRC make any claim as the validity or reliability of any implied uses of these data.

Digital tax parcels taken from SRPC database. Data should be used for planning purposes only. Data was derived from various sources and were updated at different time frames, with varying levels of accuracy.

For further information regarding GIS data sources contact SRPC GIS staff.

Prepared by: **Strafford Regional Planning Commission**
100 Waterford St., Suite 12, Rochester, NH 03067
T: (603) 994-3500 F: (603) 994-3504 E: srpc@strafford.org
Date: March 25, 2014
Path: G:\Township\Map-Master\Planning\1
2014\ConservationLands.mxd

Map prepared by Strafford Regional Planning Commission for planning purposes only



- ### Legend
- | | | |
|------------------------|----------------|----------------------------------|
| Municipal Boundary | State | Conservation Land |
| Tax Parcel | Recreational | Primary Protection Agency |
| Brook, Stream, River | Local | Municipal/County |
| Lake, Pond | Not Maintained | Federal |
| Wetland | Private | State |
| Pawtuckaway State Park | | Other Public/Quasi-Public |
| | | Private |