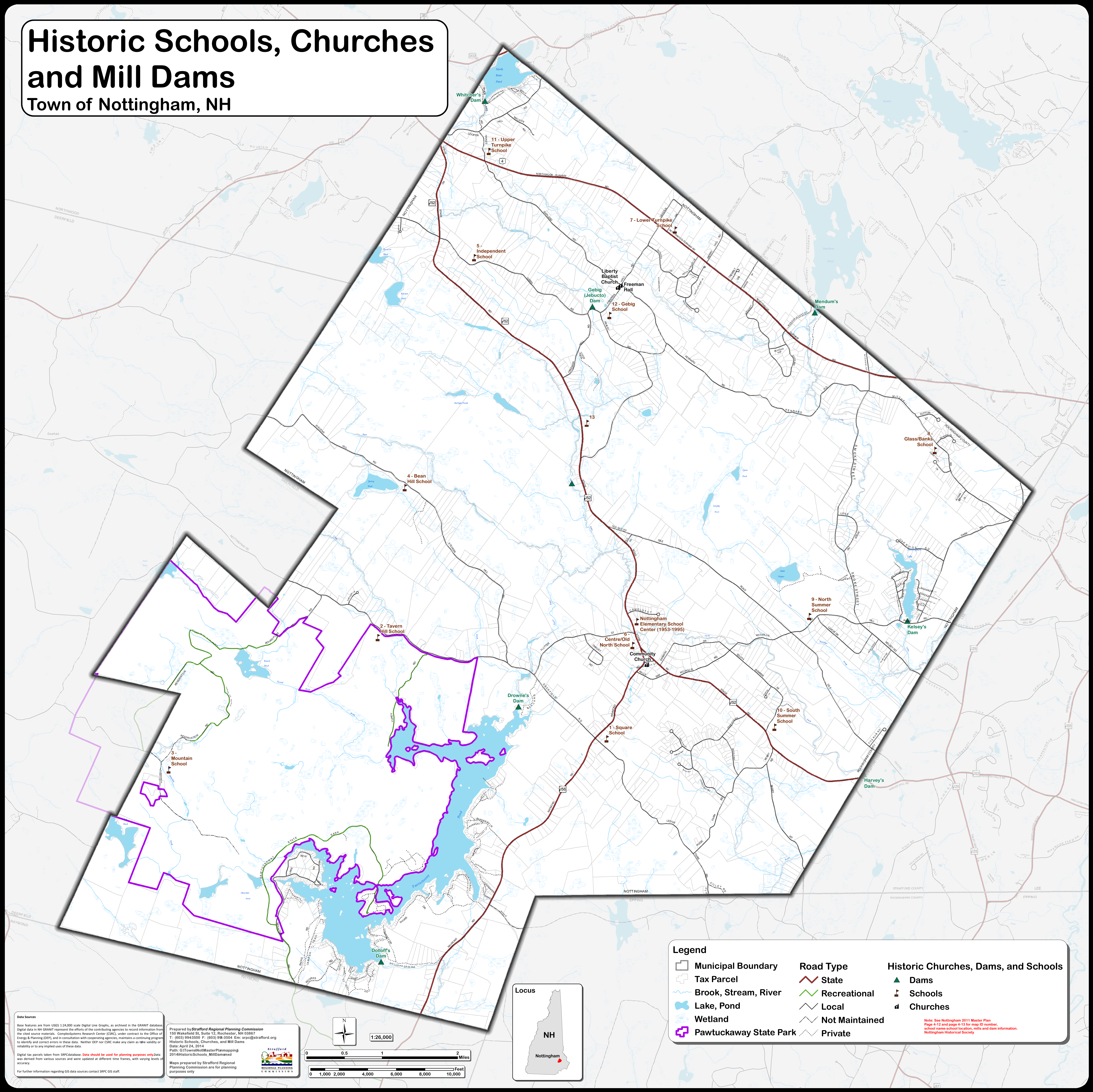


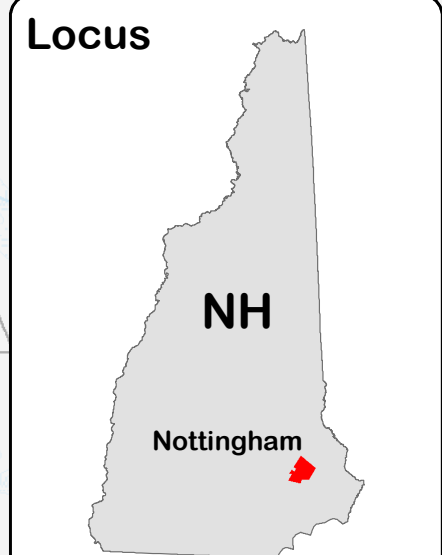
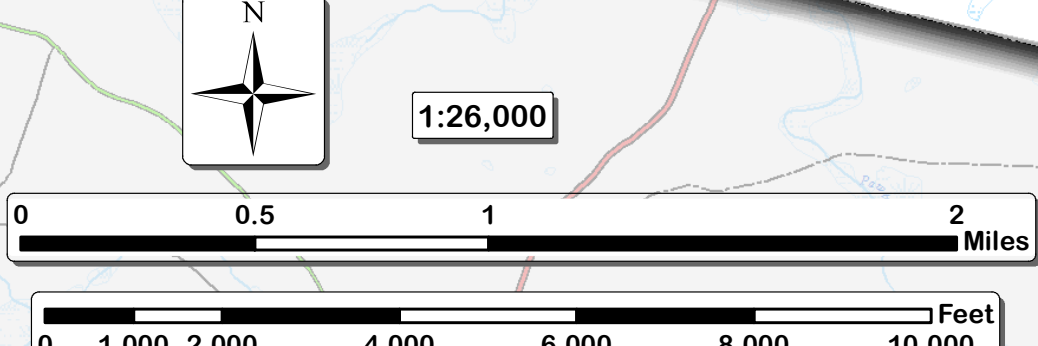
Historic Schools, Churches and Mill Dams

Town of Nottingham, NH



Data Sources
Base features are from USGS 1:24,000 scale Digital Line Graphs, as archived in the GRANIT database. Digital data in NH GRANIT represent the efforts of the contributing agencies to record information from the cited source materials. Complex Systems Research Center (CSRC), under contract to the Office of Energy & Planning (OEP), and in consultation with cooperating agencies, maintains a continuing program to identify and correct errors in these data. Neither OEP nor CSRC make any claim as to the validity or reliability or to any implied use of these data.
Digital tax parcels taken from SRPC database. Data should be used for planning purposes only. Data was derived from various sources and were updated at different time frames, with varying levels of accuracy.
For further information regarding GIS data sources contact SRPC GIS staff.

Prepared by **Stratford Regional Planning Commission**
150 Wakefield St., Suite 12, Rochester, NH 03867
T: (603) 994-3550 F: (603) 994-3504 E: arc@stratford.org
Historic Schools, Churches, and Mill Dams
Date: April 24, 2014
Path: G:\Town\Nottingham\MasterPlan\mapping\2014\HistoricSchools_MillDams.mxd
Maps prepared by Stratford Regional Planning Commission are for planning purposes only.



Legend

- Municipal Boundary
- Tax Parcel
- Brook, Stream, River
- Lake, Pond
- Wetland
- Pawtuckaway State Park

Road Type

- State
- Recreational
- Local
- Not Maintained
- Private

Historic Churches, Dams, and Schools

- Dams
- Schools
- Churches

Note: See Nottingham 2011 Master Plan
Page 4-12 and page 4-13 for map ID number,
school name-school location, mills and dam information.
Nottingham Historical Society