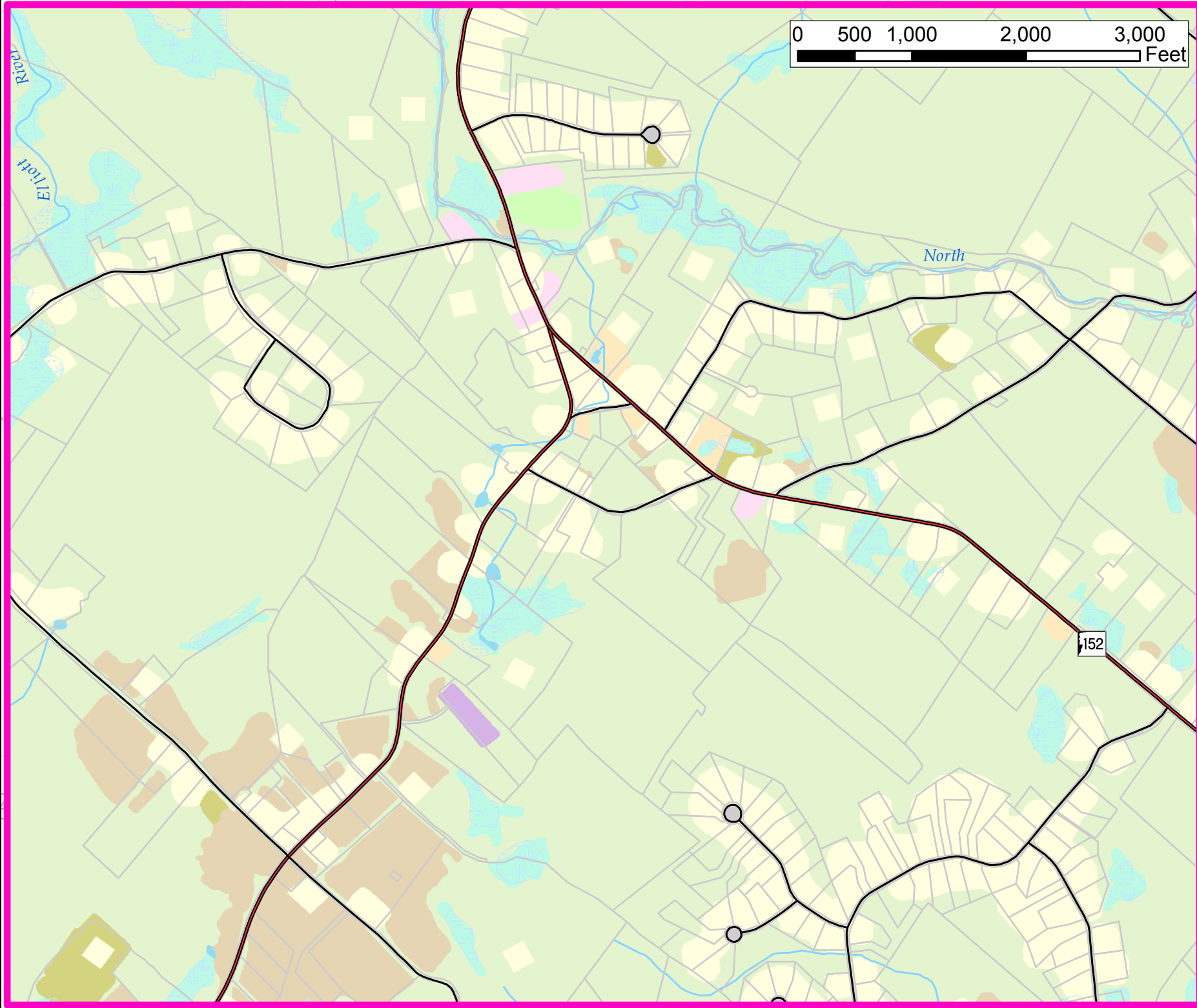


Land Use

Town of Nottingham, NH



Type	Area (acres)
Residential	2,080.1
Commercial	60.1
Government and Educ.	13.2
Trans. and Utilities	402.6
Recreation	21.1
Other Outdoor/Built-Up	4.2
Agricultural	763.4
Forested or Brush	22,606.7
Other Barren Land	252.7
Water	1,137.3
Wetlands	3,654.2
Total	30,995.6

Note: This information is tabulated for areas within the Town of Nottingham only.

Legend

- | | | | |
|------------------------|----------------|------------------------------|-----------------------------|
| Municipal Boundary | State | Residential | Other Outdoor/Built-Up Land |
| Tax Parcel | Recreational | Commercial | Agricultural |
| Brook, Stream, River | Local | Government and Educational | Forested or Brush |
| Lake, Pond | Not Maintained | Transportation and Utilities | Other Barren Lands |
| Wetland | Private | Recreation | Wetlands |
| Pawtuckaway State Park | | | |

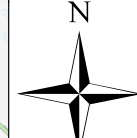
Data Sources

Base features are from USGS 1:24,000 scale Digital Line Graphs, as archived in the GRANIT database. Digital data in NH GRANIT represent the efforts of the contributing agencies to record information from the cited source materials. Complex Systems Research Center (CSRC), under contract to the Office of Energy & Planning (OEP), and in consultation with cooperating agencies, maintains a continuing program to identify and correct errors in these data. Neither OEP nor CSRC make any claim as to the validity or reliability or to any implied use of these data.

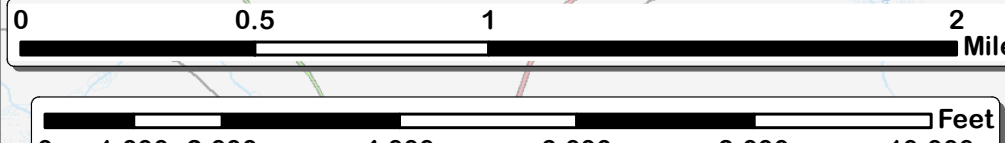
Digital tax parcels taken from SRPC database. Data should be used for planning purposes only. Data was derived from various sources and were updated at different time frames, with varying levels of accuracy.

For further information regarding GIS data sources contact SRPC GIS staff.

Prepared by **Stafford Regional Planning Commission**
150 Wakefield St., Suite 12, Rochester, NH 03867
T: (603) 994-3500 F: (603) 994-3504 E: srpc@stafford.org
Land Use
Date: March 24, 2014
Path: G:\Town\Nottingham\2014LandUse.mxd
Maps prepared by Stafford Regional Planning Commission are for planning purposes only.



1:26,000



Locus

