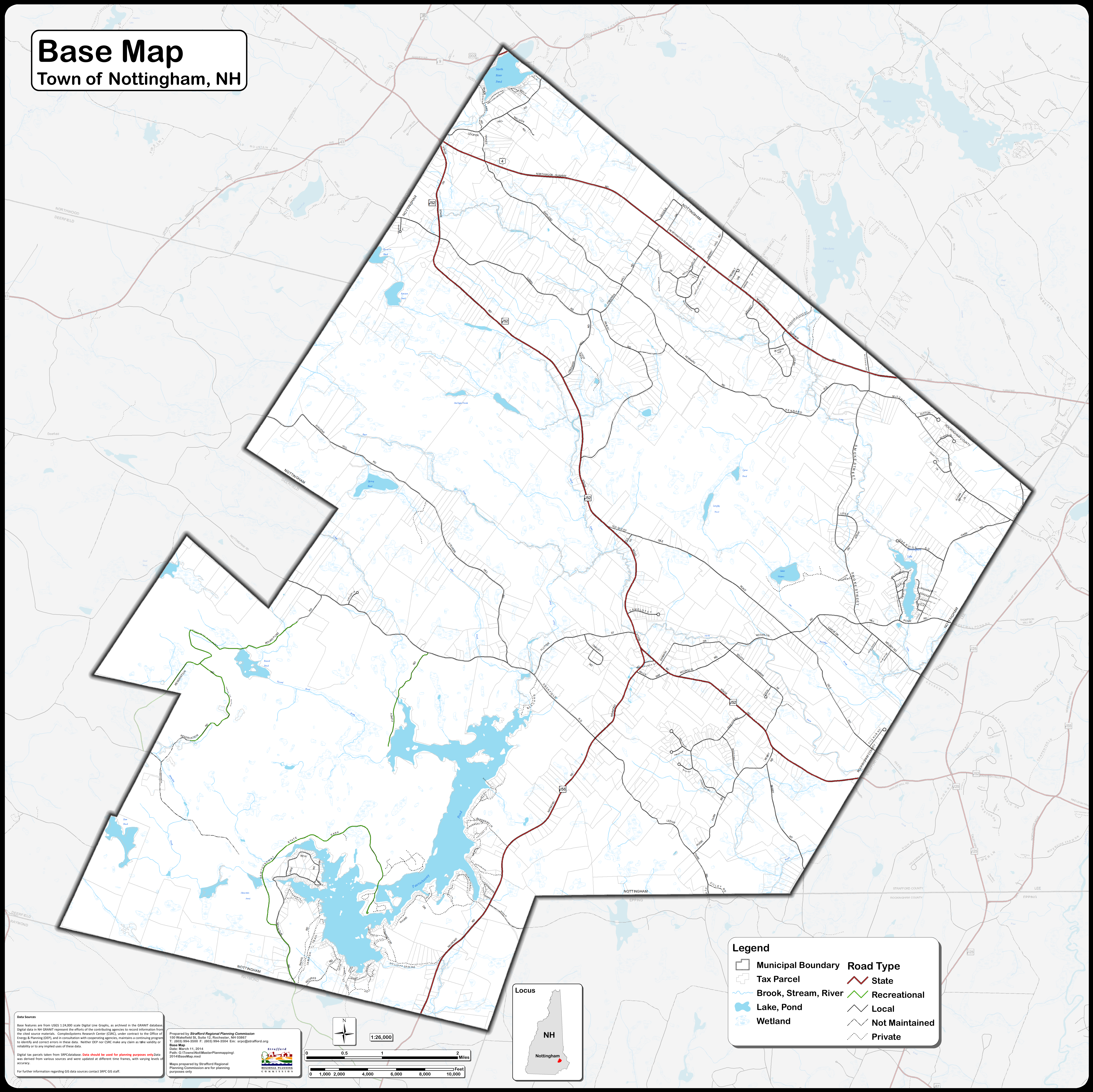


Base Map

Town of Nottingham, NH



Data Sources

Base features are from USGS 1:24,000 scale Digital Line Graphs, as archived in the GRANIT database. Digital data in NH GRANIT represent the efforts of the contributing agencies to record information from the cited source materials. Complex Systems Research Center (CSRC), under contract to the Office of Energy & Planning (OEP), and in consultation with cooperating agencies, maintains a continuing program to identify and correct errors in these data. Neither OEP nor CSRC make any claim as to the validity or reliability or to any implied use of these data.

Digital tax parcels taken from SRPC database. Data should be used for planning purposes only. Data was derived from various sources and were updated at different time frames, with varying levels of accuracy.

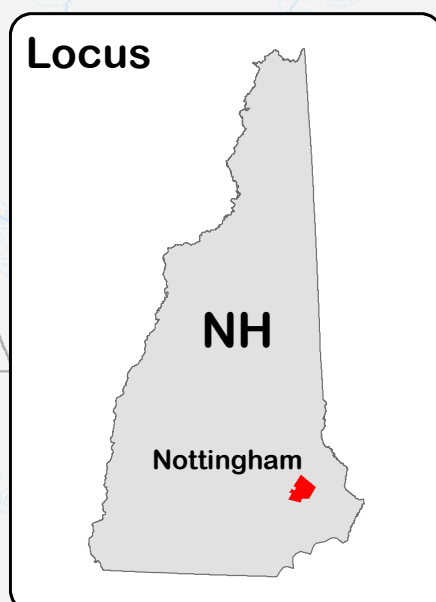
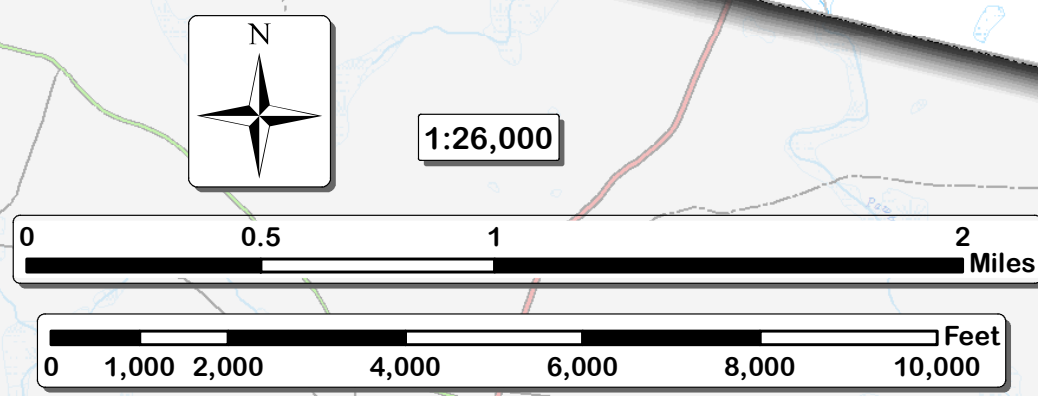
For further information regarding GIS data sources contact SRPC GIS staff.

Prepared by **Stafford Regional Planning Commission**
150 Wakefield St., Suite 12, Rochester, NH 03867
T: (603) 994-3500 F: (603) 994-3504 E: srpc@stafford.org

Base Map

Date: March 11, 2014
Path: C:\Users\Nottingham\PlanMapping\2014\BaseMap.mxd

Maps prepared by Stafford Regional Planning Commission are for planning purposes only.



Legend

Municipal Boundary	Road Type
Tax Parcel	State
Brook, Stream, River	Recreational
Lake, Pond	Local
Wetland	Not Maintained
	Private