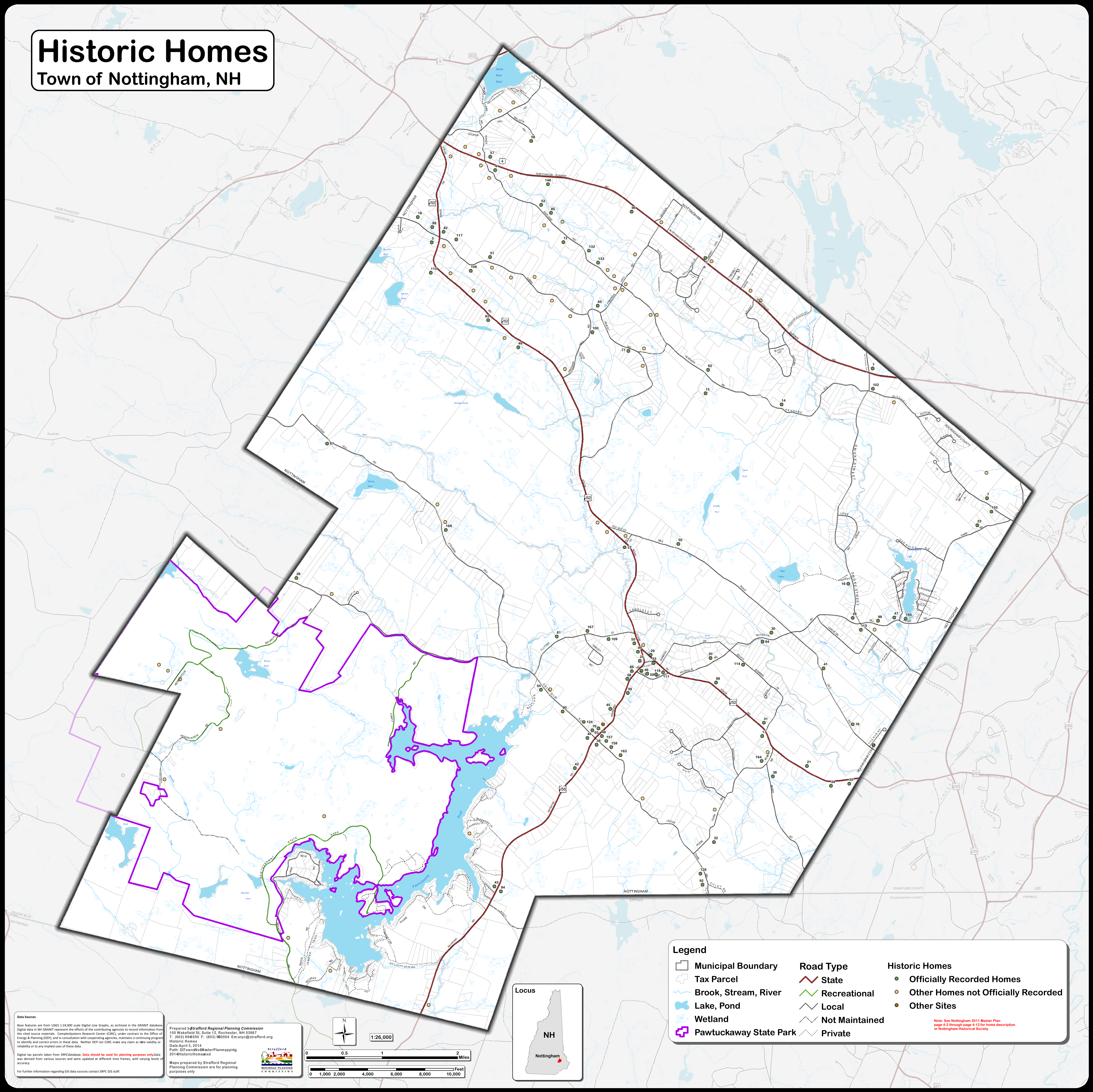


Historic Homes

Town of Nottingham, NH



Data Sources

Base features are from USGS 1:24,000 scale Digital Line Graphs, as archived in the GRANIT database. Digital data in NH GRANIT represent the efforts of the contributing agencies to record information from the cited source materials. Complex Systems Research Center (CSRC), under contract to the Office of Energy & Planning (OEP), and in consultation with cooperating agencies, maintains a continuing program to identify and correct errors in these data. Neither OEP nor CSRC make any claim as to the validity or reliability or to any implied use of these data.

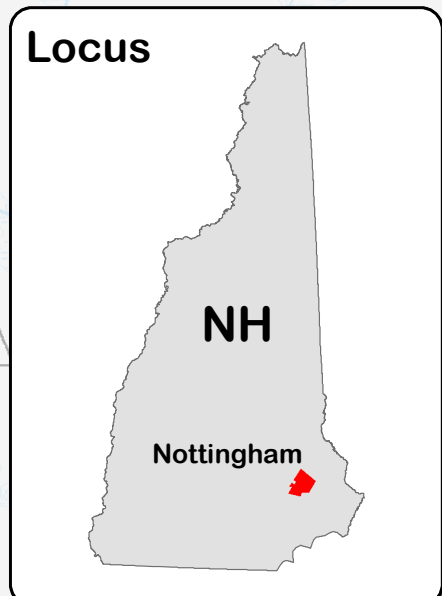
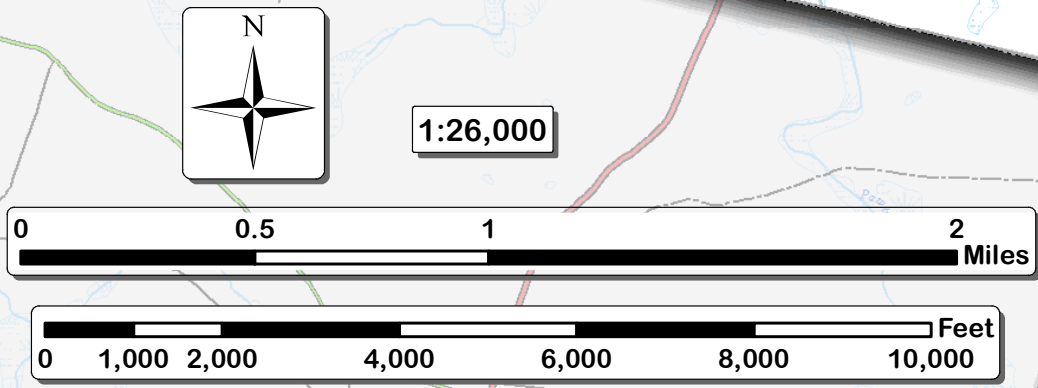
Digital tax parcels taken from SRPC database. Data should be used for planning purposes only. Data was derived from various sources and were updated at different time frames, with varying levels of accuracy.

For further information regarding GIS data sources contact SRPC GIS staff.

Prepared by **Strafford Regional Planning Commission**
150 Wakefield St., Suite 12, Rochester, NH 03867
T: (603) 994-5500 F: (603) 963-5504 E: srpc@straftord.org

Historic Homes
Data: April 3, 2014
Path: G:\Town\NoMasterPlan\mapimg
2014\HistoricHomes.mxd

Maps prepared by Strafford Regional Planning Commission are for planning purposes only.



- | Legend | | |
|------------------------|----------------|-------------------------------------|
| Municipal Boundary | Road Type | Historic Homes |
| Tax Parcel | State | Officially Recorded Homes |
| Brook, Stream, River | Recreational | Other Homes not Officially Recorded |
| Lake, Pond | Local | Other Sites |
| Wetland | Not Maintained | |
| Pawtuckaway State Park | Private | |

Note: See Nottingham 2011 Master Plan
page 4-2 through page 4-12 for home description
or Nottingham Historical Society