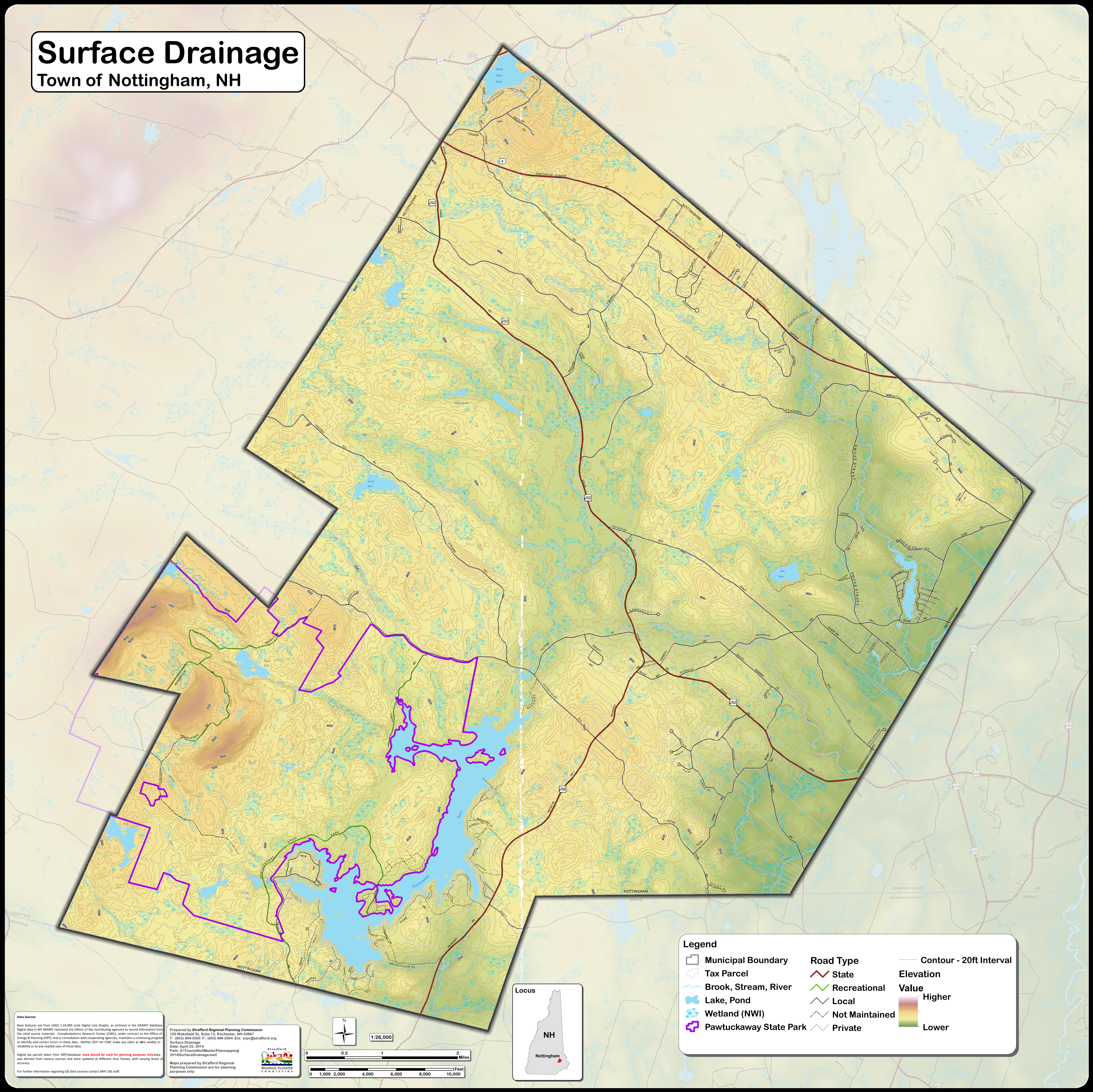


Surface Drainage

Town of Nottingham, NH



Data Sources

Base features are from USGS 1:24,000 scale Digital Line Graphs, as archived in the GRANIT database. Digital data in NH GRANIT represent the efforts of the contributing agencies to record information from the cited source materials. Complex Systems Research Center (CSRC), under contract to the Office of Energy & Planning (OEP), and in consultation with cooperating agencies, maintains a continuing program to identify and correct errors in these data. Neither OEP nor CSRC make any claim as to the validity or reliability or to any implied use of these data.

Digital tax parcels taken from SRPC database. Data should be used for planning purposes only. Data was derived from various sources and were updated at different time frames, with varying levels of accuracy.

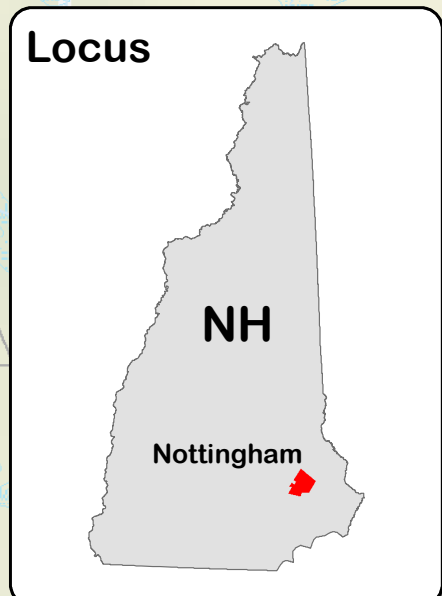
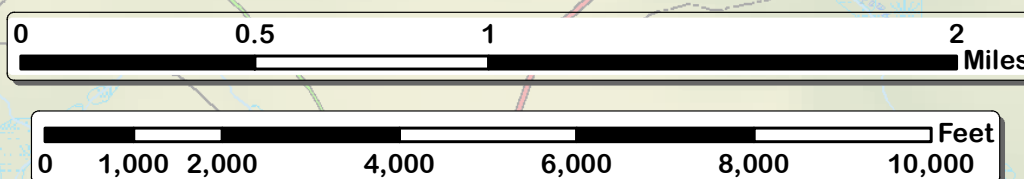
For further information regarding GIS data sources contact SRPC GIS staff.

Prepared by **Stratford Regional Planning Commission**
150 Wakefield St., Suite 12, Rochester, NH 03867
T: (603) 998-3500 F: (603) 998-3004 E: arp@stratford.org
Surface Drainage
Date: April 23, 2014
Path: G:\Towns\Nottingham\MasterPlanning\2014\SurfaceDrainage.mxd

Maps prepared by Stratford Regional Planning Commission are for planning purposes only.



1:26,000



Legend

- | | | |
|------------------------|------------------|-------------------------|
| Municipal Boundary | Road Type | Contour - 20ft Interval |
| Tax Parcel | State | Elevation |
| Brook, Stream, River | Recreational | Value |
| Lake, Pond | Local | Higher |
| Wetland (NWI) | Not Maintained | Lower |
| Pawtuckaway State Park | Private | |