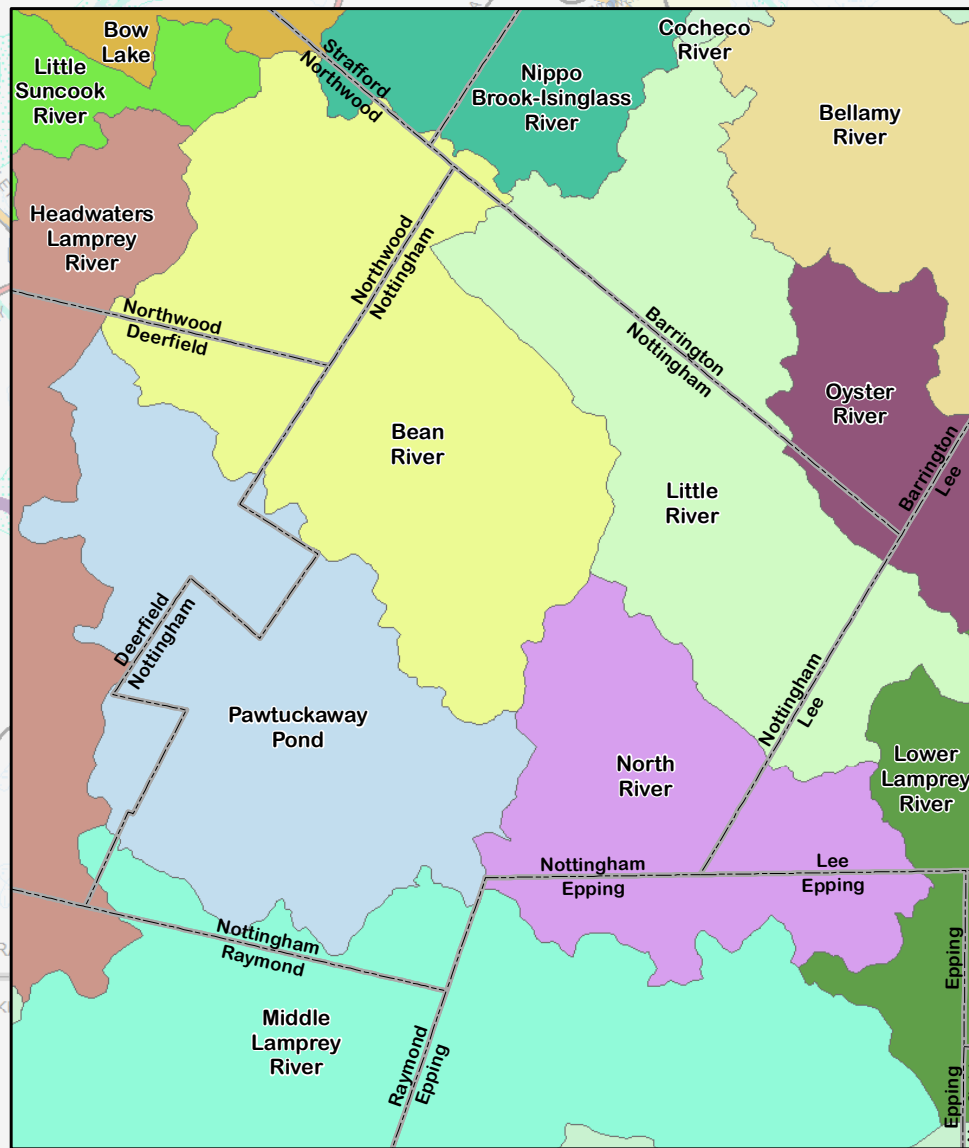
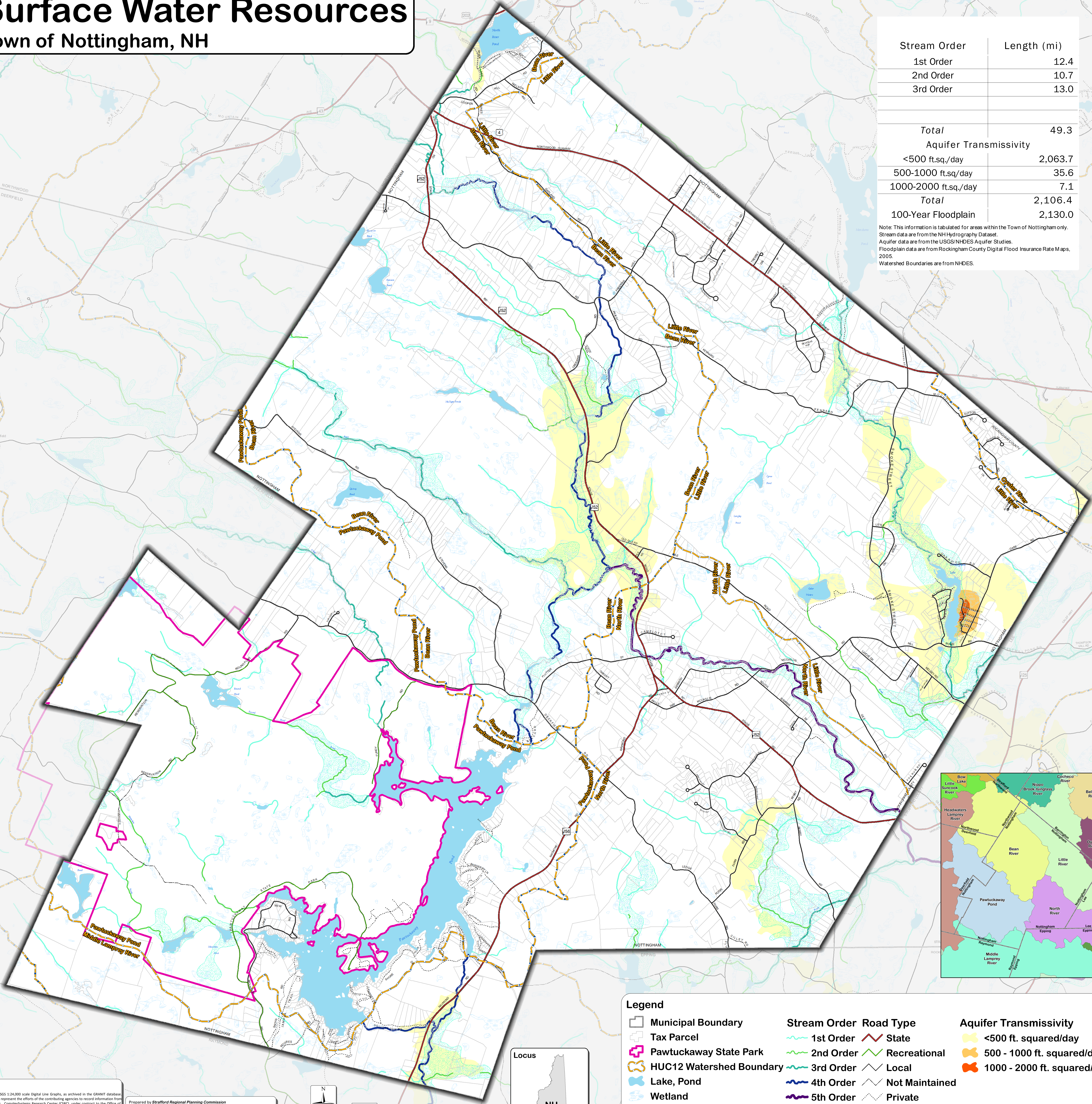


Surface Water Resources

Town of Nottingham, NH

Stream Order	Length (mi)
1st Order	12.4
2nd Order	10.7
3rd Order	13.0
Total	49.3
Aquifer Transmissivity	
<500 ft.sq./day	2,063.7
500-1000 ft.sq/day	35.6
1000-2000 ft.sq/day	7.1
Total	2,106.4
100-Year Floodplain	2,130.0

Note: This information is tabulated for areas within the Town of Nottingham only. Stream data are from the NH Hydrography Dataset. Aquifer data are from the USGS/NHDES Aquifer Studies. Floodplain data are from Rockingham County Digital Flood Insurance Rate Maps, 2005. Watershed Boundaries are from NHDES.



Legend

- Municipal Boundary
- Tax Parcel
- Pawtuckaway State Park
- HUC12 Watershed Boundary
- Lake, Pond
- Wetland
- 100-Year Floodplain

Stream Order

- 1st Order
- 2nd Order
- 3rd Order
- 4th Order
- 5th Order

Road Type

- State
- Recreational
- Local
- Not Maintained
- Private

Aquifer Transmissivity

- <500 ft. squared/day
- 500 - 1000 ft. squared/day
- 1000 - 2000 ft. squared/day

