

Aquifer Protection Overlay District



Town of Nottingham New Hampshire

Legend

- Aquifer Protection Overlay District
- Zoning District
- Commercial Industrial
- Residential Agricultural
- Town Center

Base Features

- Municipal Boundary
- Stream, River
- Lake, Pond

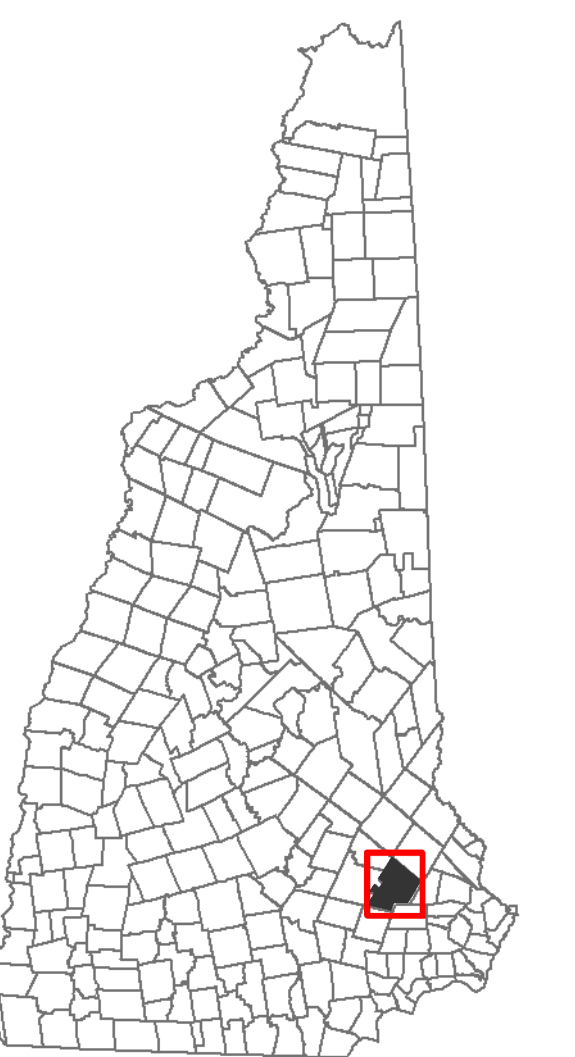
Roads

- Class I Primary Highway
- Class II Secondary Highway
- Class III Recreational Road
- Class V Local Road
- Class VI Not Maintained
- Private

For provisions of this overlay district see Article III Section A of the Town of Nottingham, New Hampshire Zoning Ordinance amended 16 March 2017.

Map Adopted: May 23, 2018

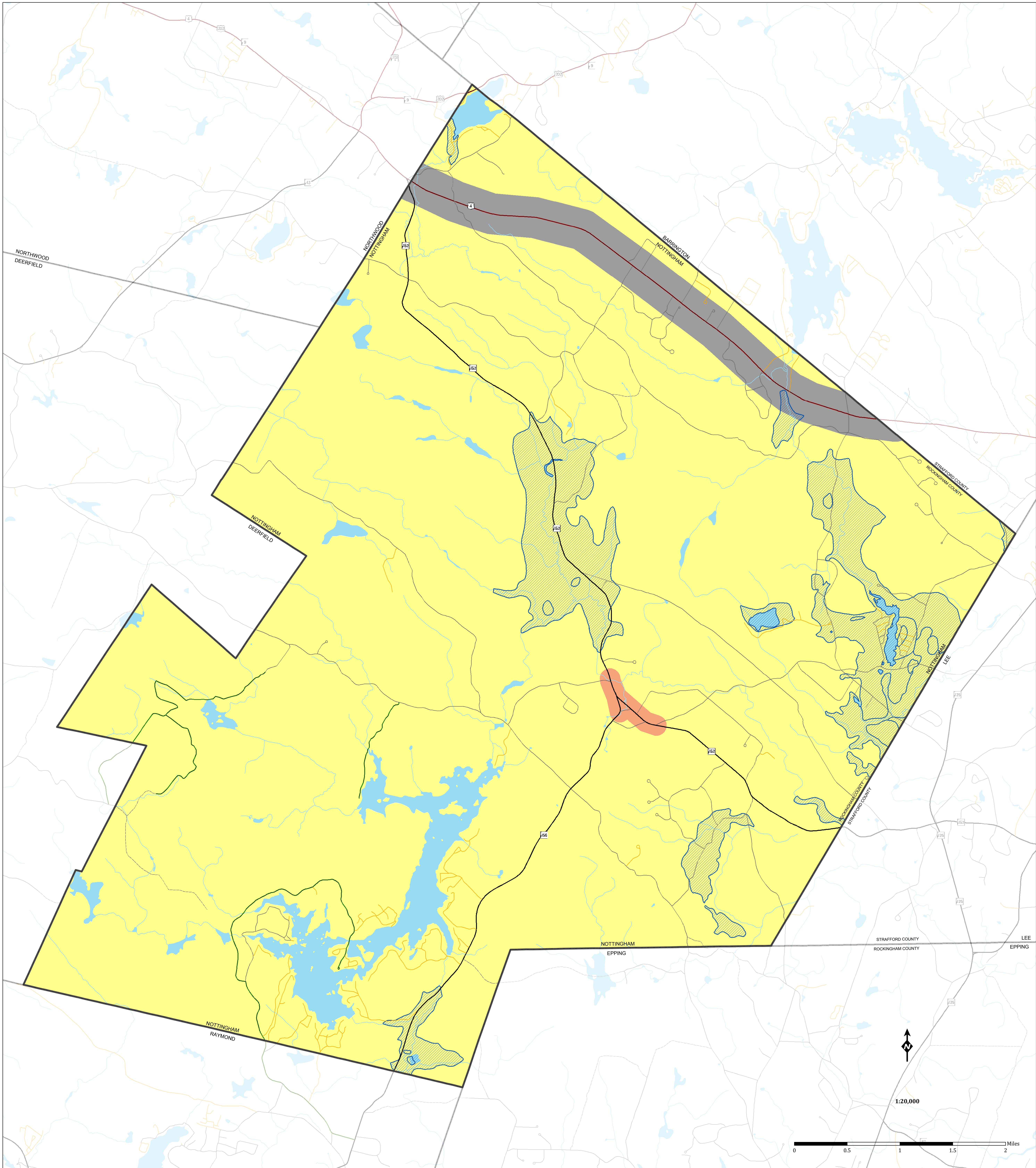
MAP IS FOR PLANNING PURPOSES ONLY.



Prepared by the Stafford Regional Planning Commission
150 Waterfield St. Suite 112 Rochester, NH 03867
T: (603) 994-5500 E: srpc@stafford.org

Date: 5/14/2018 Author: RM
Path: M:\TownsvinMapRequests\AquiferOD.mxd

Base features from NH GRANIT database. Digital data in NH GRANIT represent the efforts of the contributing agencies to record information from the cited source materials. Earth Systems Research Center (ESRC), under contract to the Office of Energy and Planning (OEP), and in consultation with cooperating agencies, maintains a continuing program to identify and correct errors in these data. Neither OEP nor ESRC make any claim as to the validity or reliability or to any implied uses of these data. Digital tax parcels taken from SRPC database. Data should be used for planning purposes only. Data were derived from various sources and were updated at different times, with varying levels of accuracy. Please notify SRPC of any errors or omissions.



1:20,000

