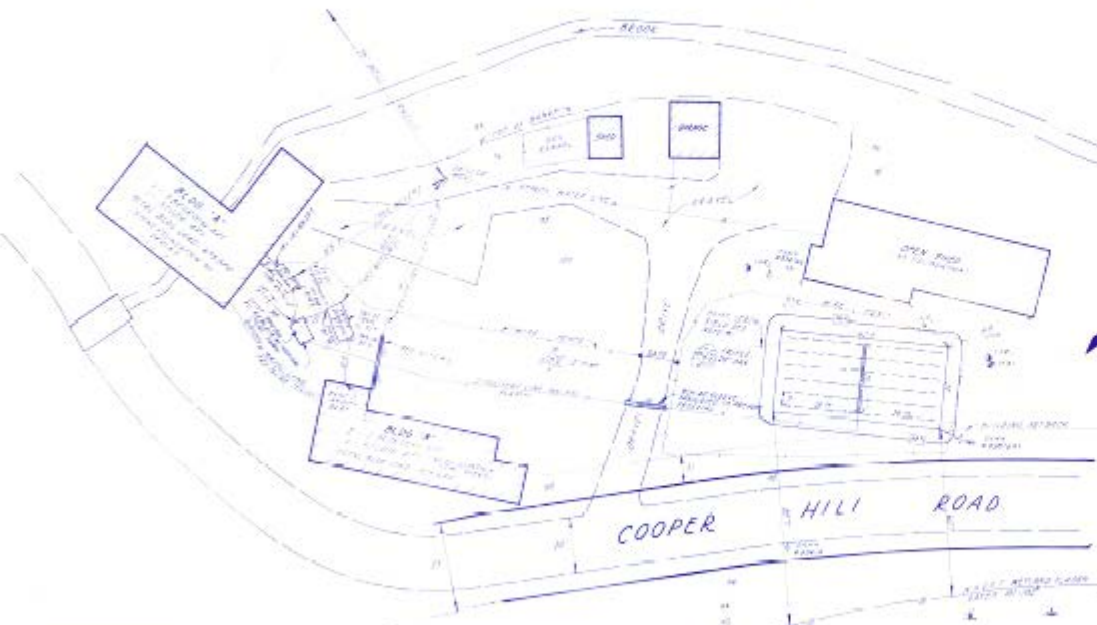


NO.	DATE	BY	REVISION
1	10/10/83	PL	PRELIMINARY
2	10/10/83	PL	REVISED PER COMMENTS
3	10/10/83	PL	REVISED PER COMMENTS
4	10/10/83	PL	REVISED PER COMMENTS
5	10/10/83	PL	REVISED PER COMMENTS
6	10/10/83	PL	REVISED PER COMMENTS
7	10/10/83	PL	REVISED PER COMMENTS
8	10/10/83	PL	REVISED PER COMMENTS
9	10/10/83	PL	REVISED PER COMMENTS
10	10/10/83	PL	REVISED PER COMMENTS
11	10/10/83	PL	REVISED PER COMMENTS
12	10/10/83	PL	REVISED PER COMMENTS
13	10/10/83	PL	REVISED PER COMMENTS
14	10/10/83	PL	REVISED PER COMMENTS
15	10/10/83	PL	REVISED PER COMMENTS
16	10/10/83	PL	REVISED PER COMMENTS
17	10/10/83	PL	REVISED PER COMMENTS
18	10/10/83	PL	REVISED PER COMMENTS
19	10/10/83	PL	REVISED PER COMMENTS
20	10/10/83	PL	REVISED PER COMMENTS
21	10/10/83	PL	REVISED PER COMMENTS
22	10/10/83	PL	REVISED PER COMMENTS
23	10/10/83	PL	REVISED PER COMMENTS
24	10/10/83	PL	REVISED PER COMMENTS
25	10/10/83	PL	REVISED PER COMMENTS
26	10/10/83	PL	REVISED PER COMMENTS
27	10/10/83	PL	REVISED PER COMMENTS
28	10/10/83	PL	REVISED PER COMMENTS
29	10/10/83	PL	REVISED PER COMMENTS
30	10/10/83	PL	REVISED PER COMMENTS
31	10/10/83	PL	REVISED PER COMMENTS
32	10/10/83	PL	REVISED PER COMMENTS
33	10/10/83	PL	REVISED PER COMMENTS
34	10/10/83	PL	REVISED PER COMMENTS
35	10/10/83	PL	REVISED PER COMMENTS
36	10/10/83	PL	REVISED PER COMMENTS
37	10/10/83	PL	REVISED PER COMMENTS
38	10/10/83	PL	REVISED PER COMMENTS
39	10/10/83	PL	REVISED PER COMMENTS
40	10/10/83	PL	REVISED PER COMMENTS
41	10/10/83	PL	REVISED PER COMMENTS
42	10/10/83	PL	REVISED PER COMMENTS
43	10/10/83	PL	REVISED PER COMMENTS
44	10/10/83	PL	REVISED PER COMMENTS
45	10/10/83	PL	REVISED PER COMMENTS
46	10/10/83	PL	REVISED PER COMMENTS
47	10/10/83	PL	REVISED PER COMMENTS
48	10/10/83	PL	REVISED PER COMMENTS
49	10/10/83	PL	REVISED PER COMMENTS
50	10/10/83	PL	REVISED PER COMMENTS



- THERE ARE NO WETLANDS OR BODIES OF WATER TO BE AVOIDED (EXCEPT IN AREAS OF WETLANDS)
- THERE ARE NO WETLANDS OR BODIES OF WATER TO BE AVOIDED (EXCEPT IN AREAS OF WETLANDS)
- THE SITE IS TO BE DEVELOPED IN ACCORDANCE WITH THE ZONING REGULATIONS OF THE COUNTY OF SHERBROOKE

LOADING AREA REQUIREMENTS
 1. 1000 SQ. FT. PER TRUCK (1000 SQ. FT. PER TRUCK)
 2. 1000 SQ. FT. PER TRUCK (1000 SQ. FT. PER TRUCK)
 3. 1000 SQ. FT. PER TRUCK (1000 SQ. FT. PER TRUCK)

NOTE: CAPACITY
 1. 1000 SQ. FT. PER TRUCK (1000 SQ. FT. PER TRUCK)
 2. 1000 SQ. FT. PER TRUCK (1000 SQ. FT. PER TRUCK)
 3. 1000 SQ. FT. PER TRUCK (1000 SQ. FT. PER TRUCK)

NOTE: 2. 1000 SQ. FT. PER TRUCK (1000 SQ. FT. PER TRUCK)
 1. 1000 SQ. FT. PER TRUCK (1000 SQ. FT. PER TRUCK)
 2. 1000 SQ. FT. PER TRUCK (1000 SQ. FT. PER TRUCK)
 3. 1000 SQ. FT. PER TRUCK (1000 SQ. FT. PER TRUCK)

- NOTES**
1. ALL AREAS SHOWN IN THIS PLAN ARE TO BE DEVELOPED IN ACCORDANCE WITH THE ZONING REGULATIONS OF THE COUNTY OF SHERBROOKE.
 2. ALL AREAS SHOWN IN THIS PLAN ARE TO BE DEVELOPED IN ACCORDANCE WITH THE ZONING REGULATIONS OF THE COUNTY OF SHERBROOKE.
 3. ALL AREAS SHOWN IN THIS PLAN ARE TO BE DEVELOPED IN ACCORDANCE WITH THE ZONING REGULATIONS OF THE COUNTY OF SHERBROOKE.
 4. ALL AREAS SHOWN IN THIS PLAN ARE TO BE DEVELOPED IN ACCORDANCE WITH THE ZONING REGULATIONS OF THE COUNTY OF SHERBROOKE.
 5. ALL AREAS SHOWN IN THIS PLAN ARE TO BE DEVELOPED IN ACCORDANCE WITH THE ZONING REGULATIONS OF THE COUNTY OF SHERBROOKE.
 6. ALL AREAS SHOWN IN THIS PLAN ARE TO BE DEVELOPED IN ACCORDANCE WITH THE ZONING REGULATIONS OF THE COUNTY OF SHERBROOKE.
 7. ALL AREAS SHOWN IN THIS PLAN ARE TO BE DEVELOPED IN ACCORDANCE WITH THE ZONING REGULATIONS OF THE COUNTY OF SHERBROOKE.
 8. ALL AREAS SHOWN IN THIS PLAN ARE TO BE DEVELOPED IN ACCORDANCE WITH THE ZONING REGULATIONS OF THE COUNTY OF SHERBROOKE.
 9. ALL AREAS SHOWN IN THIS PLAN ARE TO BE DEVELOPED IN ACCORDANCE WITH THE ZONING REGULATIONS OF THE COUNTY OF SHERBROOKE.
 10. ALL AREAS SHOWN IN THIS PLAN ARE TO BE DEVELOPED IN ACCORDANCE WITH THE ZONING REGULATIONS OF THE COUNTY OF SHERBROOKE.

PAUL LONGUEUIL
 ENGINEER



COOPER HILL ROAD
 BULLINGHAM, N. B.

SCALE: 1" = 20' DATE: 17, 1983