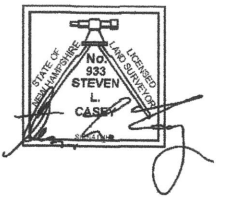


ZONING DIMENSIONAL TABLE - COMMERCIAL/INDUSTRIAL		
	REQUIRED	PROVIDED
MIN. LOT AREA	2 ACRES	25.10 ACRES
MIN. LOT FRONTAGE	200 FT	401.46 FT
MIN. FRONT YARD	150 FT	>150 FT
MIN. SIDE YARD	100 FT	>100 FT
MIN. REAR YARD	100 FT	>100 FT
MAXIMUM LOT COVERAGE	50%	<50%
MAXIMUM HEIGHT	34 FT ABOVE GRADE PLANE	40 FT (WAIVER)

1. A VARIANCE WILL NEED TO BE SOUGHT FROM THE REQUIREMENTS OF THE TOWN OF NOTTINGHAM ZONING BYLAW SECTION 7.K: DIMENSIONAL REQUIREMENTS (MAXIMUM BUILDING HEIGHT IN AN INDUSTRIAL USE ZONE)

PARKING TABLE			
DESCRIPTION	REQUIRED	EXISTING	PROPOSED
STANDARD SPACES	SEE NOTE 2	24	22
STANDARD ACCESSIBLE SPACES	N/A	---	---
VAN ACCESSIBLE SPACES	N/A	---	2
TOTAL SPACES	SEE NOTE 2	24	24

2. REQUIRED PARKING IS THAT WHICH IS ADEQUATE FOR EMPLOYEES AND PATRONS.
 3. EXISTING PARKING SPACES ARE ESTIMATED TO BE 20-24.
 4. IT IS PROPOSED TO REVISE THE CURRENT PARKING CONFIGURATION TO ACCOMMODATE 24 SPACES AS SHOWN.



PROFESSIONAL LAND SURVEYOR DATE

PROFESSIONAL ENGINEER DATE

**SHEA CONCRETE
 PROPOSED
 MANUFACTURING
 FACILITY**
 160 OLD TURNPIKE ROAD
 IN
 NOTTINGHAM
 NEW HAMPSHIRE
 ROCHESTER COUNTY)

ZBA PLAN

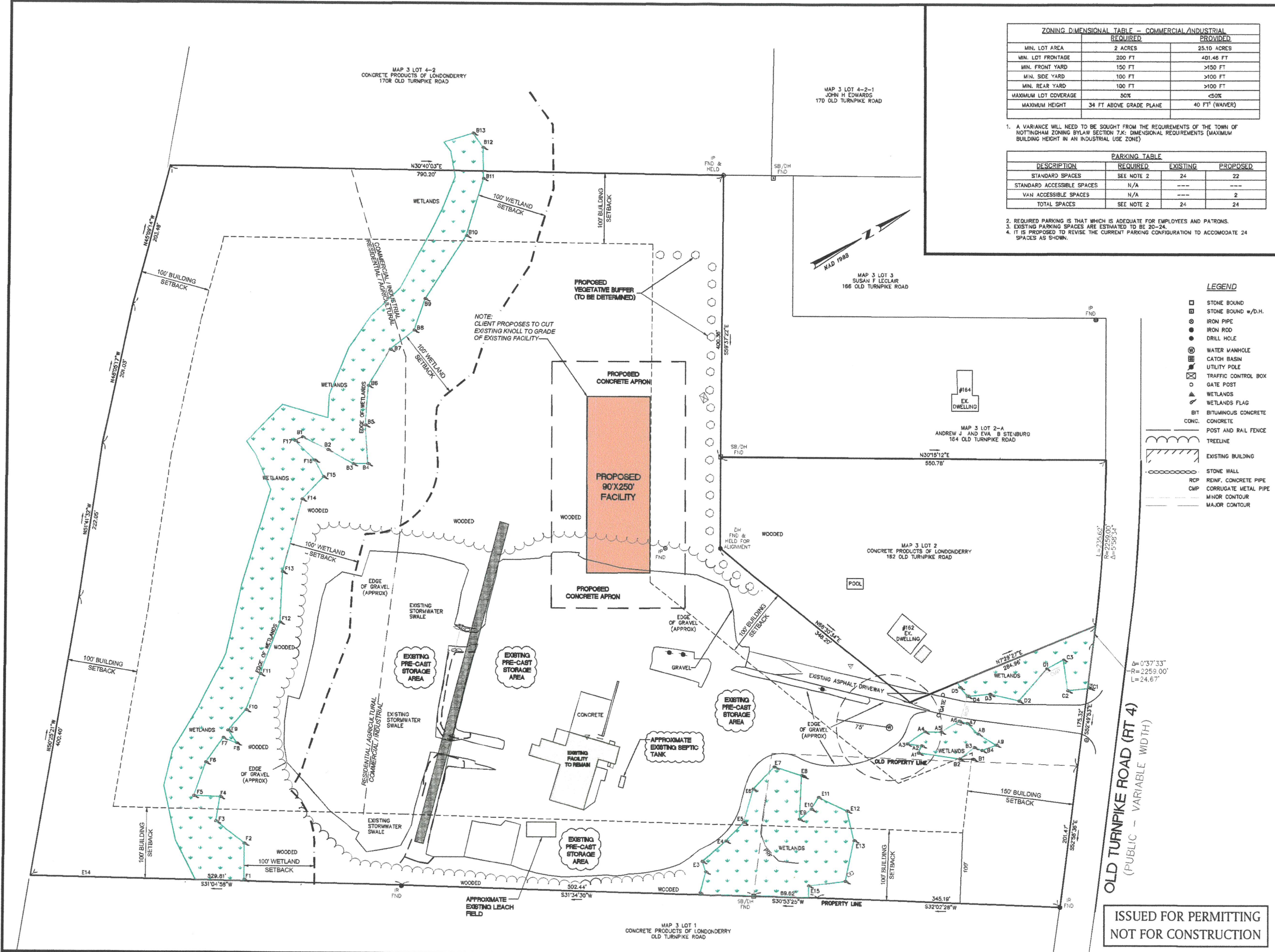
FEBRUARY 25, 2022

REVISIONS:

NO.	DATE	DESC.
XX XX-XX-XX	XXXXX	XXXXXXXXXX

PREPARED FOR:
 SHEA CONCRETE
 87 HAVERHILL AVE
 AMESBURY, MA 01950

BSC GROUP
 803 Summer Street
 Boston, Massachusetts
 02127
 617 896 4300



**ISSUED FOR PERMITTING
 NOT FOR CONSTRUCTION**