

Nature's Place Early Learning Center, LLC

Pictures of 186 Old Turnpike Road, Nottingham, NH

For Conceptual Meeting with Planning Board 8/9/2023

Inside Space

Photo 1 & 2 – These show the current entry, an updated entry will include a ramp for handicap access and possibly a keyless entry system for families and staff

Photo 3 – Shows the immediate hall upon entering....in the new plan, there will be another set of double doors to lead into center, the trim on the far right is one bathroom (to become a staff bathroom), and the other 2 door ways on the right are the bathrooms (minimal changes planned with these, mainly just cleaning and ensuring fixtures are in)...the orange wall to left will have an opening so that staff in those classrooms can then directly see into bathrooms (per our licensing board, this is a must)...also, note the wood ceilings – these are seen throughout, but will be replaced, per code, with a sheetrock ceiling. There will also be a small hall and door built to that the 3rd bathroom will be accessible by the 2 classrooms that will be on the “bar” side of the building.

Photo 4 – Shows one of 3 bathrooms

Photo 5 - After turning left in the hall, you enter this large space. The 2 large windows will be replaced with lower placed windows for fresh air exchange and egress, and the floors will be coated with a substance like garage epoxy paint...there will be a long wall, with doors making this one large space 2 separate classrooms, they will be divided with another wall that will also include a door that will make each of the 2 rooms accessible to each other.

Photo 6 – This is what is referred to as the “bar” side of the space – the bar and wall will be removed and 2 classrooms will be built in this space...they will also have a wall dividing the space with a door in the middle so each room is accessible to each other, as well as door to enter the hall to the 2 rooms on the front part of the building and doors to reach the exit door pictured here

Photo 7 – This is the large bay window as seen from the front of the building – this will be removed and 4 new windows installed, the rooms will also all be painted a neutral earth-tone color

Photo 8 – This is another door, behind the “bar” wall – it will remain and will be an exit door for one of the proposed classrooms on this side of the building

Photo 9 – This is space behind the bar wall and will become part of the 2 classrooms for that side of the building...you can see some parts of a mechanical room which will remain as a utility room and the door on the far left will also remain as an exit door from the proposed office space...the area near the ladder will become a small kitchen space

Photo 10 & 11 – Show the utility room with heat and hot water systems are, as well as electrical and may house the water filter and softener systems if needed, as well as a panel for a generator system and the fire alarm system

Photo 12 – This is space behind the bar wall, on the far end, the other side is the entry hallway and this space will become part of the classrooms on this side

Photo 13 – This is the current kitchen area and will be renovated to house an office space for owners and staff...all equipment pictured throughout will be placed in storage and sold as it can be

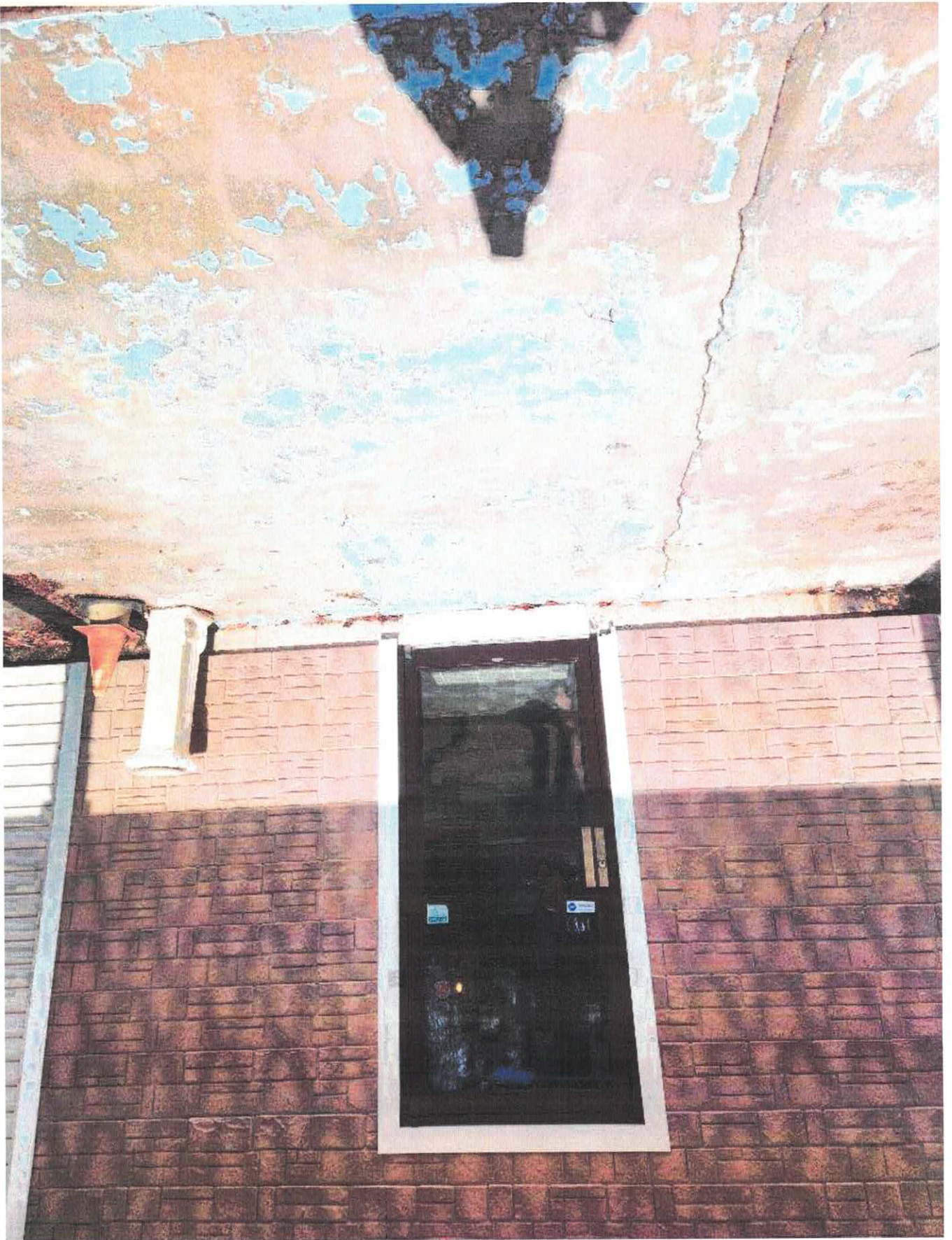


PHOTO 1



PHOTO 2

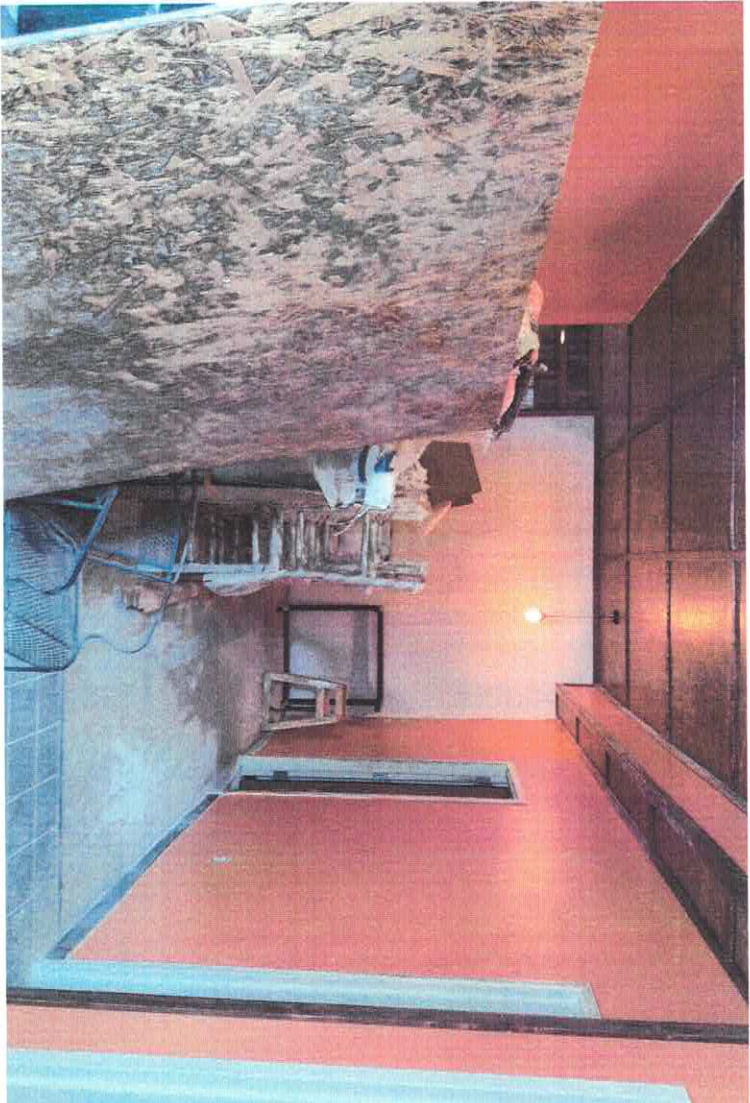


PHOTO 3

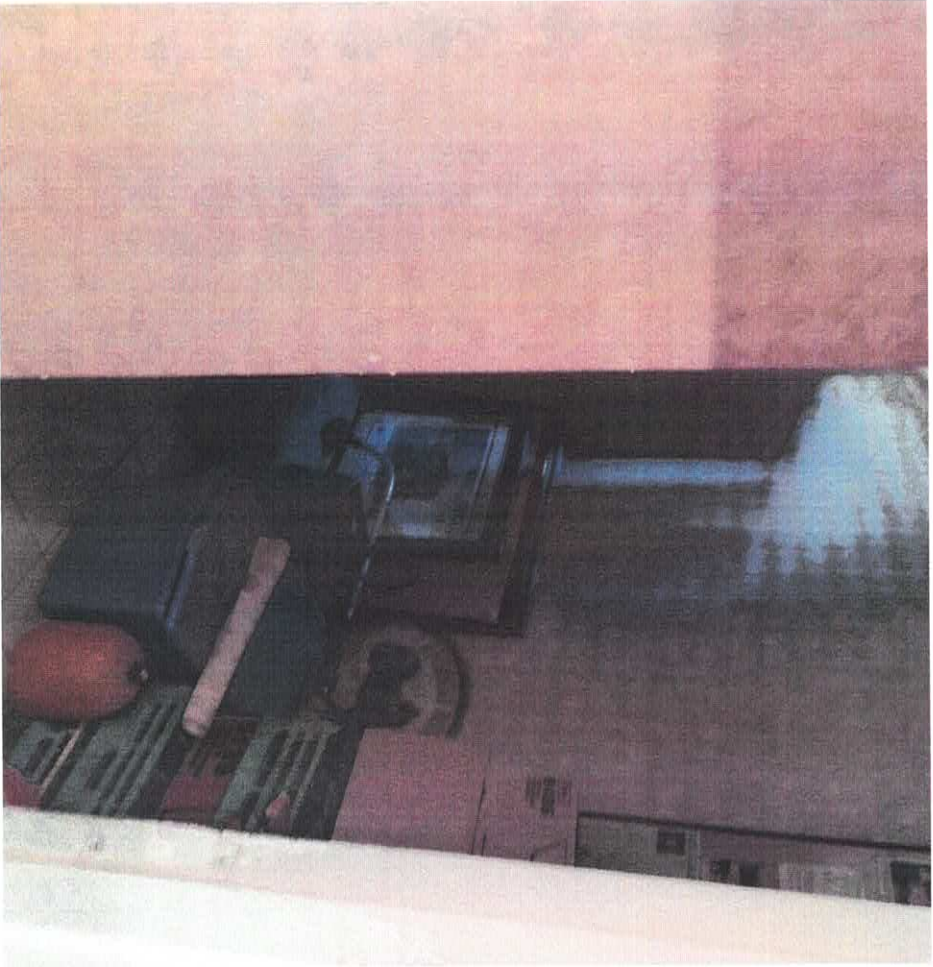


PHOTO 4



PHOTO 5



PHOTO 6

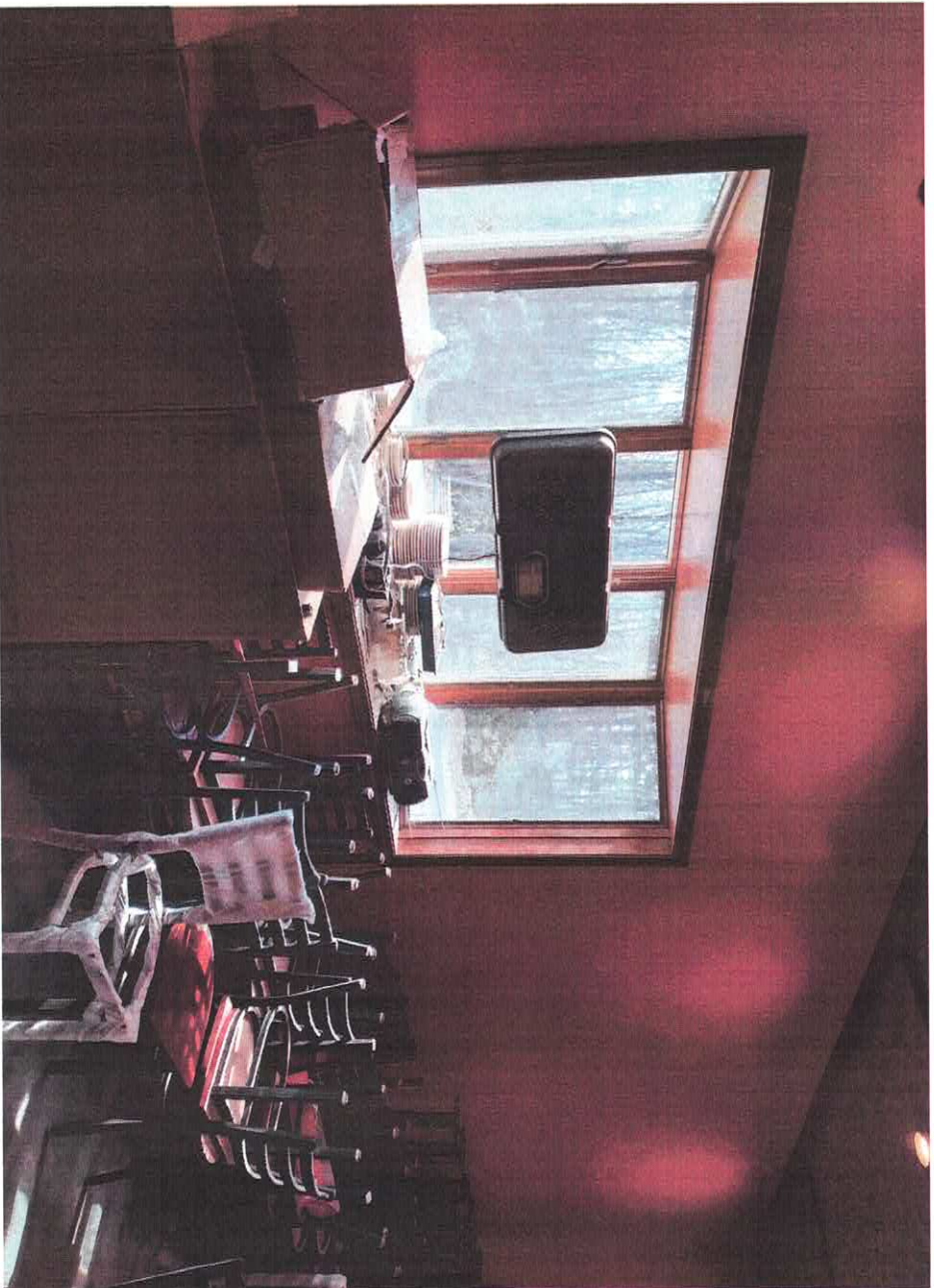


PHOTO 7



PHOTO 8



PHOTO 9



PHOTO 10

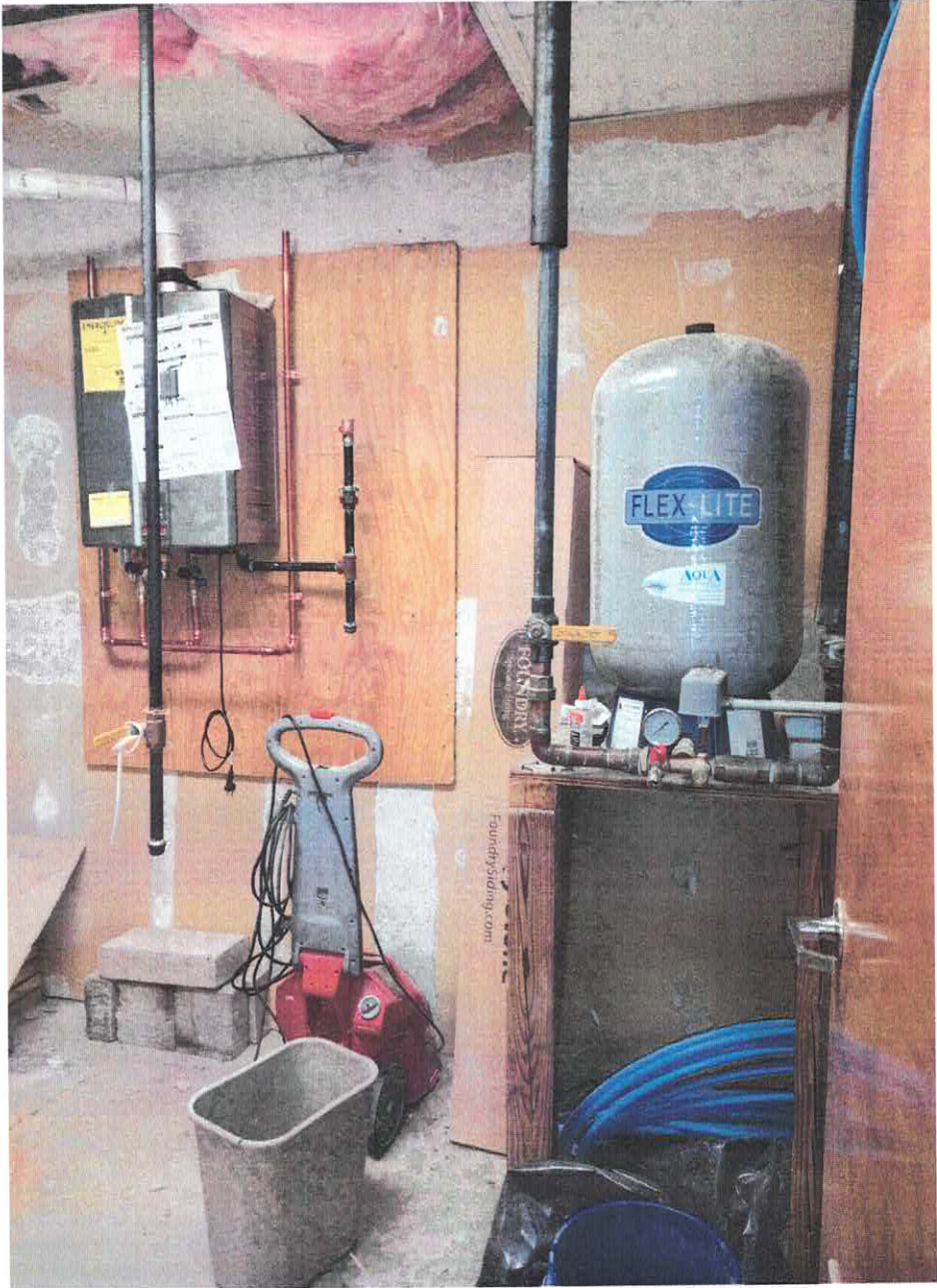


PHOTO 11



PHOTO 12



PHOTO 13