

Northeast Watercross Championship & Kubota Trust

**Tax Map 69 Lots 8 & 10
214 Raymond Rd Nottingham NH 03290**

Updated Version : October 5, 2021

Town of Nottingham NH
139 Stage Rd
Nottingham NH 03290

To: Dale Sylvia & Jaye Vilchock
CC: Board of Selectmen & Planning

From:
Northeast Watercross Championship & Kubota Trust

To All it may concern,

Attached a complete package of full emergency plan for the Watercross events to be held 3 times a year at 214 Raymond Rd Nottingham NH. Please review & respond with any changes or additions you may feel necessary.

Emergency Action Plan

Kubota Trust/Northeast Watercross Events

214 Raymond Rd Nottingham NH 03290

My Name is Tami DeFrancesco, I am the trustee of the Kubota Trust located at 214 Raymond Rd Nottingham NH. We are hosting 3 Watercross events 3 times per year. Watercross is snowmobiling on the water. Events Start on Friday with Practice 4-6 pm. Saturday & Sundays 10 am -6 pm. You may hear engines run until 1/2 prior to the start and 1/2 after the finish to give the racers time to get in and out of trailers. The Event Schedule will be posted 90 days in advance and all town emergency departments will be notified as well as all required permits and applications will be submitted.

I am submitting this Narrative to provide information in case of any emergency & details of the event days.

Staff consists of Event Coordinator, Gate attendants, parking staff, cleaning staff, Pit crew, recovery, boat drivers, counters & announcer. Many help with setting up /taking down snow fences & signs a few days prior to and after each event.

At no time is more than 1500 people aloud on the property at any time including all spectators, racers

& personal. Self contained camping(No disposal of any grey water) is permitted in designated spaces (shown on map) with 20 Rv Camper Spots. Campers will be directed in with staff to designated areas on lot 8 & lot 10. Parking is also on Lots 8 & 10 with 249 total parking spots. Racers will enter into the pit area with the trailers and snowmobiles. No Parking is permitted on the gravel access way into the property and around the pit area to allow for emergency vehicles. All roadways will be labeled with signs.

All Food /Vendors will have a state peddlers license & must comply with state or local licenses.

Portable Toilets will be calculated based on 100 people per toilet and placed around the events locations as marked on the site plan. Portable toilets will be pumped as needed by Emi's Porta Potty out of Nottingham NH throughout the Events.

In the event of an emergency that needs evacuation of areas around the pond there are 2 locations North & South of the pond that will be clearly labeled as Emergency assembly areas. If a reason to exit the property via a 2nd means of egress arises there are 2 ways out through the South Side of Pond logging trail marked & guided with arrows.

Incase of a spill or fire there are Spill kits & fire extinguishers located on site. Each Racer is required to carry a fire extinguisher & there will be 1 located at the Start Line and 1 located across the pond at the drag exit area. Spill Kits are located on each recovery boat & 1 in the Pit area and will be clearly marked.

In conclusion, I have attached the full site map and page 5 to show detailed emergency exit and assembly areas.

INDEX:

Part 1

- 1) Spill Plan Instructions, SPILL RESPONSE PLAN
- 2) Spill Plan Prevention Procedure
- 3) Emergency Spill Contents on Boats & Pit Area
- 4) Emergency Signs Photos
- 5) EMT & Police Detail
- 6) Emergency Assembly Area
- 7) 2nd Exit Emergency Evacuation Map
- 8) Spill Kit Location Map

Part 2

- -NH DES Environment Fact Sheet
- -Hydrogeologic Study Case #21-003-SIT
- -Final Site Plans of Kubota Trust

1.

Spill Plan Instructions: _____ **SPILL RESPONSE PLAN**

According to the EPA, an oil spill contingency plan should be a set of instructions that outline necessary procedures for before, during, and after an emergency. The primary objectives of spill response plans are to:

1. Allow response personnel to prepare for and safely respond to spill incidents.
2. Ensure an effective and efficient response that highlight and account for geographical challenges.
3. Identify potential equipment, manpower, and other resources necessary to implement a spill response.
4. Outline response procedures and techniques for combating the spill at a specific location.
5. Improve regulatory compliance efforts.

According to the SPILL RESPONSE PLAN for Northeast Watercross Championship, Snowmobile Watercross Events, prepared by Kubota Trust, the following practices will be implemented as part of the plan.

RESPONSIBILITIES

- The **Facility Responsible Person, Steve Reynolds** has primary responsibility for coordinating the response to emergencies, including chemical spills.
- **Staff Members & Land Owners- Kubota Trust, James George & Tami Defrancesco** will ensure that employees & racers are familiar with these procedures and receive any necessary training via You Tube : [Spill Response Training | 7 Steps to Spill Cleanup "Pig"](#)
Spill response training - 7 Step to spill clean up
- **All Staff Members & employees** should follow these procedures in the event of a spill.

CONTACTS:

STEVE REYNOLDS - 603 969-9961

JAMES GEORGE- 603-231-4856

TAMI DEFRANCESCO - 603- 490- 1858

EMERGENCY: NHDES -603-271-3899

NH STATE POLICE - 603-223-4381 or 911

Spill Control and Response Although every effort will be taken to prevent spills and releases, a thorough spill control and response plan will be developed before any race or practice. The following practices will be followed in

the event of a spill, and will be incorporated in the final Plan:

1. Sleds will be inspected by event coordinator before use to ensure that there are no leaks and not pose a safety or environmental hazard;

2. Sled fueling will be conducted on land and in a manner that limits spillage to the ground surface.

3. Fuel storage will be managed individually by the event participants with no common fuel storage tanks allowed on the premises.

4. Oil-sorbent fueling pads will be placed around the fuel fill ports to collect drips and spillage of fuel during fueling of the sleds.

5. Spill cleanup requirements shall be clearly posted and site personnel and racers shall be made aware of the site-specific spill response plan requirements. 6.

Materials and equipment necessary for spill cleanup shall be kept in the material storage area shown on the provided SITE PLAN and MAP;

7. A spill response team will be designated before each event and will receive training on recovery of submerged snowmobiles and containment and cleanup of fuel impacts to surface water;

8. Spill response team personnel shall wear appropriate protective clothing to prevent injury from contact with petroleum products. The personal protective equipment shall be located in the Emergency Spill Kit;

9. Two purpose-built recovery boats will be stationed at the event to recover snowmobile and driver from the water. Each boat is to be equipped with petroleum-absorbent pads and booms that can be deployed to recover the fuel sheens on the water surface.

10. If spilled fuel is observed on the water surface during the snowmobile recovery, the event will stop until the fuel sheen is fully cleaned up and no observable sheen is present;

11. All spills shall be cleaned up immediately after discovery. The location of the spill will be documented and recorded as part of the notification protocol. 12. Recovered

fuel and adsorbent pads and booms will be containerized for appropriate off-site

treatment and disposal; and

13. Spill notification will be provided to applicable agencies on accordance with New

Hampshire Department of Environmental Services (NHDES) statutory and

regulatory requirements.

• All spills shall be cleaned up immediately after discovery. The location of the spill will be documented and recorded as part of the notification protocol.

• The personnel shall wear appropriate protective clothing to prevent injury from contact with a hazardous substance. Which are located in the Emergency Spill Kit * Site Map Location

Confine and absorb oil and fuel spills on water.

- Absorbs and retains oils and oil-based liquids - including lubricants and fuels - without taking in a drop of water
- Booms float at surface for easy retrieval, even when saturated
- Tough outer mesh is UV resistant for long-term outdoor use without degradation; lets fluids easily pass through to filler material
- Rope running along length of boom withstands up to 400-lb. loads, adding strength for deployment and retrieval
- Spunbond polypropylene skin is UV resistant up to 12 months; meets ANSI and MIL spec standards for static decay
- Strong, zinc-plated carbon steel attachment clips and rings allow you to link booms together for greater length
- Bright white color makes booms easier to see in outdoor environments and clearly shows saturation level
- Can be incinerated after use to reduce waste or for fuels blending

FACILITY MAP

Attach is map or sketch of the facility showing (a) the locations of each spill response kit. Note Spill Kits will be on all Recovery Boats at all times.

Spill Kit Contents:

Spill Kit in 5-Gallon High-Visibility Economy Container

Included:

RULES TO RACERS:

Mandatory

During the fueling of all sleds Absorbent Mat Pads must be used at all times.

1. Use a funnel or a spout with an automatic stop device to prevent overfilling the gas tank; and
2. Use absorbent materials or petroleum absorption pads while fueling to catch splash-back and any drops during fueling.

To All STAFF

CLEAN-UP PROCEDURES

Spilled chemicals should be effectively and quickly contained and cleaned up. Staff Members should clean up spills themselves **only if properly trained and protected**. Staff Members who are not trained in spill cleanup procedures should report the spill to the Responsible Person(s) listed above, warn other employees & racers and leave the area.

The Maximum Cleanup Amounts- In the event of spills greater than these amounts, contact the appropriate responders listed in the Emergency Contact Numbers listed above.

The following general guidelines should be followed for evacuation, spill control, notification of proper authorities, and general emergency procedures in the event of a chemical incident in which there is potential for a significant release of hazardous materials.

1. Evacuation

Persons in the immediate vicinity of a spill should *immediately evacuate* the premises (except for employees with training in spill response in circumstances described below). If the spill is of "medium" or "large" size, or if the spill seems hazardous, immediately notify emergency response personnel.

2. Spill Control Techniques

Once a spill has occurred, the employee/ racer needs to contact Event coordinator NOTE: If you are cleaning up a spill yourself, make sure you are aware of the hazards associated with the materials spilled, have adequate ventilation, and proper personal protective equipment. Treat all residual chemical and cleanup materials as hazardous waste.

3. Spill Response and Cleanup -

Chemical spills are divided into three categories: Small, Medium and Large. Response and cleanup procedures vary depending on the size of the spill.

Small Spills: Any spill where the major dimension is less than 18 inches in diameter. Small spills are generally handled by internal personnel and usually do not require an emergency response by police or fire department HAZMAT teams.

- Quickly control the spill by stopping or securing the spill source. This could be as simple as up-righting a container and using floor-dry or absorbent pads to soak up spilled material. Wear gloves and protective clothing, if necessary.
- Put spill material and absorbents in secure containers if any are available.
- Consult with the Facility Responsible Person for spill and waste disposal procedures.

Medium Spills: Less than 25 Gallons • Immediately try to help contain the spill at its source by simple measures only. This means quickly up-righting a container, or putting a lid on a container, if possible. Do use absorbents where they will be immediately available.

Large Spills: More than 25 Gallons Any spill involving flammable liquid where the major dimension exceeds 6 feet in diameter; and any “running” spill, where the source of the spill has not been contained or flow has not been stopped.

- Leave the area and notify Emergency Responders (911). Give the operator the spill location, chemical name, and approximate amount.
- From a safe area, attempt to get information for the spilled chemical for the emergency responders to use. Also, be prepared to advise responders as to any ignition sources, engines, electrical power, or air conditioning/ventilation systems that may need to be shut off. Advise responders of any absorbents, containers, or spill control equipment that may be available. This may need to be done from a remote area, Use radio or phone to assist from a distance, if necessary.
- Only emergency response personnel, in accordance with their own established procedures, should handle spills greater than 6 feet in any dimension or that are continuous. Remember, once the emergency responders or HAZMAT team is on the job cleaning up spills or putting out fires, the area is under their control and no one may re enter the area until the responder in charge gives the all clear.
- Provide information for reports to supervisors and responders, just as in medium spills.

IN THE EVENT OF A PETROLEUM (OIL) SPILL

Duty To Report, NH Oil Spillage In Public Waters Act RSA 146-A:5,

1. Whoever is responsible for the operation of any oil facility, carrier, or vessel that discharges oil in violation of this chapter shall immediately notify the NHDES Waste Management Division. Any person who fails to give such notice shall be guilty of a misdemeanor if a natural person, or guilty of a felony if any other person.
2. Each day of a continuing violation shall constitute a separate offense.
3. Any person who becomes aware of an oil discharge in violation of this chapter shall immediately notify the NHDES Waste Management Division.

Notification, “Contaminated Sites Management” Env-Or 604.06

Any responsible party or other person having knowledge of a discharge of oil shall report such discharge to the NHDES Waste Management Division immediately (603) 271-3899 (Monday through Friday, 8 a.m. to 4 p.m.), or to the New Hampshire State Police Dispatch at (603) 223-4381 (24 hours/day), unless all five of the following conditions are met:

1. The discharge is less than 25 gallons.
2. The discharge is immediately contained.
3. The discharge and/or contamination is completely removed within 24 hours.
4. There is no impact or potential impact to groundwater or surface water.
5. There is no potential for vapors which pose an imminent threat to human health

Spill Log

(For spills greater than 1 quart)

Date:

Material:

Quantity:

2.

Spill Plan Prevention Procedure

1. Sleds will be inspected before use to ensure that there are no leaks and do not pose a safety or environmental hazard. Northeast WaterCross will have one dedicated staff member to monitor .
2. Sled fueling will be conducted on land and in a manner that limits spillage to the ground surface. Use a funnel or a spout with an automatic stop device to prevent overfilling the gas tank; and Racers must use absorbent materials or petroleum absorption pads while fueling to catch splash-back and any drops during fueling.
3. Fuel storage will be managed individually by the event participants with no common fuel storage tanks allowed on the premises.
4. Oil-sorbent fueling pads will be placed around the fuel fill ports to collect drips and spillage of fuel during fueling of the sleds.
5. Spill cleanup requirements shall be clearly posted and site personnel and racers shall be made aware of the site-specific spill response plan requirements.
6. Materials and equipment necessary for spill cleanup shall be kept in the material storage area shown on the provided SITE PLAN and MAP.
7. A spill response team will be designated before each event and will receive training on recovery of submerged snowmobiles and containment and cleanup of fuel impacts to surface water.
8. Spill response team personnel shall wear appropriate protective clothing to prevent injury from contact with petroleum products. The personal protective equipment shall be located in the Emergency Spill Kit.
9. Two purpose-built recovery boats will be stationed at the event to recover snowmobile and driver from the water. Each boat is to be equipped with petroleum-absorbent pads and booms that can be deployed to recover the fuel sheens on the water surface.
10. If spilled fuel is observed on the water surface during the snowmobile recovery, the event will stop until the fuel sheen is fully cleaned up and no observable sheen is present.
11. All spills shall be cleaned up immediately after discovery. The location of the spill will be documented and recorded as part of the notification protocol.
12. Recovered fuel and adsorbent pads and booms will be containerized for appropriate off-site treatment and disposal.
13. Spill notification will be provided to applicable agencies on accordance with New Hampshire Department of Environmental Services (NHDES) statutory and regulatory requirements.

3.

Emergency Spill Contents on Boats & Pit Area

Recovery Boats:

Emergency Spill Kit Contents Located on Recovery Boats:



Bright Yellow Spill Kit contains:

15" W x 20" L PIG® Absorbent Mat Pad (MAT203)
ext. dia. 3" x 48" L PIG® Blue Absorbent Sock (4048)
18" W x 30" H Polyethylene Disposal Bags (BAG201-S)
2" W x 6" L Tamperproof Seal Label (LBL100)
5-Gallon Plastic Pail with Lid

Emergency Spill Kit Contents Located In Pit Area:



Bright Yellow Spill Kit contains:

(25) Absorbent Pads, (4) Absorbent Pillows, (4) Absorbent Socks, (5) Disposal Bags and Ties,
(6) Tamper Proof Seals, Emergency Guide Book, Overpack, Pair of Gloves, Safety Goggles

4.

Emergency Signs Photos



5.

EMT & Police Detail

EMT & POLICE DETAIL

EMT & POLICE will be on location during every Race. Staff will make sure access during any emergency will be clear & marked.



Fire Extinguishers will be on site and visible in the Pit Area & S.West of the Pond at Drag exit.



All racers are also required to have one with them at all times in the trailer.

6.

Emergency Assembly

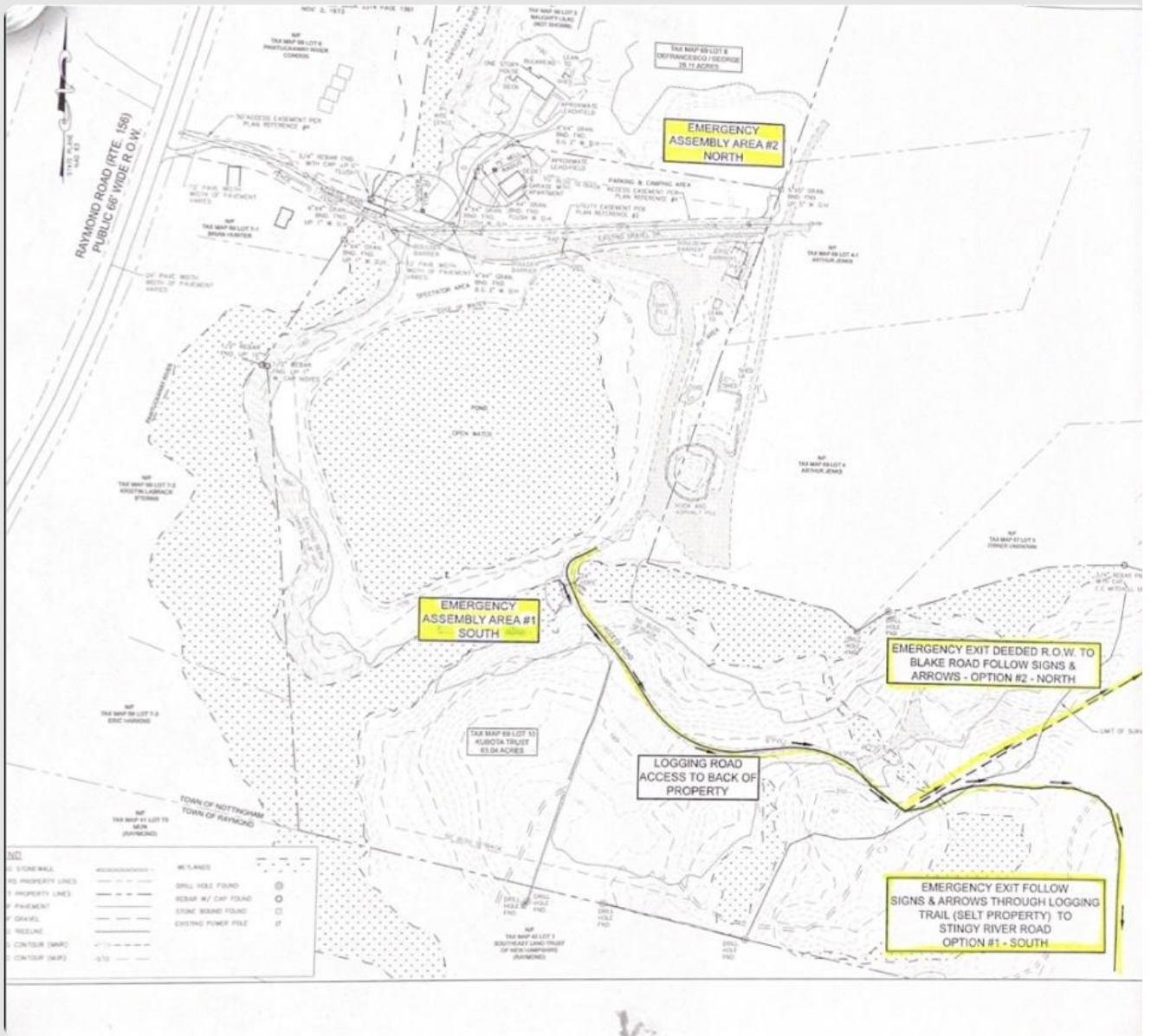
Incase of an emergency:

Emergency assembly areas are labeled and located on the Site map to the South and North of the Pond. Assembly Areas will be marked with signs:

Assembly Area #1 - South of the pond

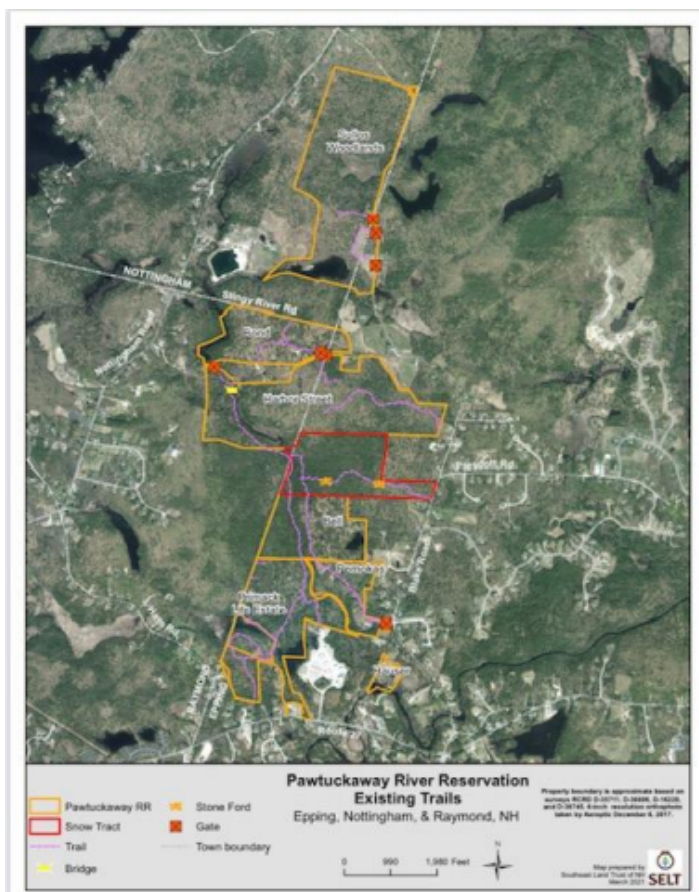
Assembly Area #2- North of the pond

See Map Page



7.

2nd Exit Emergency Evacuation Map



Defrancesco and SELT lands



- Legend**
- Parcels
 - Parcel Program
 - Reserves for Additional Lands
 - State
 - County
 - City/Town
 - Conservation and Public Lands

Map Scale
1:10,000



© 1994 GRANT, www.grant.com.edu
Map Generated: 6/12/2021

Notes

