



Marston Farm Recreation Area Trails



Description: The 45-acre Marston Farm Recreation Area is situated within a broad arc of the Little River as it flows from the dam at Nottingham Lake. The river forms the west boundary of the property and meanders through a broad floodplain forest on its way to join the Lamprey River in Lee. Steep banks topped by mature oaks and pines follow the western boundary. A sandy knoll in the southwest corner supports pitch pine, low bush blueberries, and young hardwoods. Listen for the call of fish crows in this area and look for ducks and herons in the river or along the shoreline. Below the knoll, the dense young hardwood forest provides habitat for snowshoe hare and grouse, whose tracks are visible in the winter snows. The floodplain forest continues along the east side of the property close to the trail. Look overhead while in the fields or parking lot, and you may see a great blue heron, eagle, or osprey.

The property was owned by the Marston family from the early 1800s until 1903 and was acquired by the town in 2009. The property is being developed for recreational uses for a cross-section of town residents, to include ball fields, trails, playgrounds, and racquet sport courts, as funding becomes available. The area is managed by the Nottingham Parks and Recreation Department. The Nottingham Conservation Commission Trails Committee assists with trail planning and maintenance.

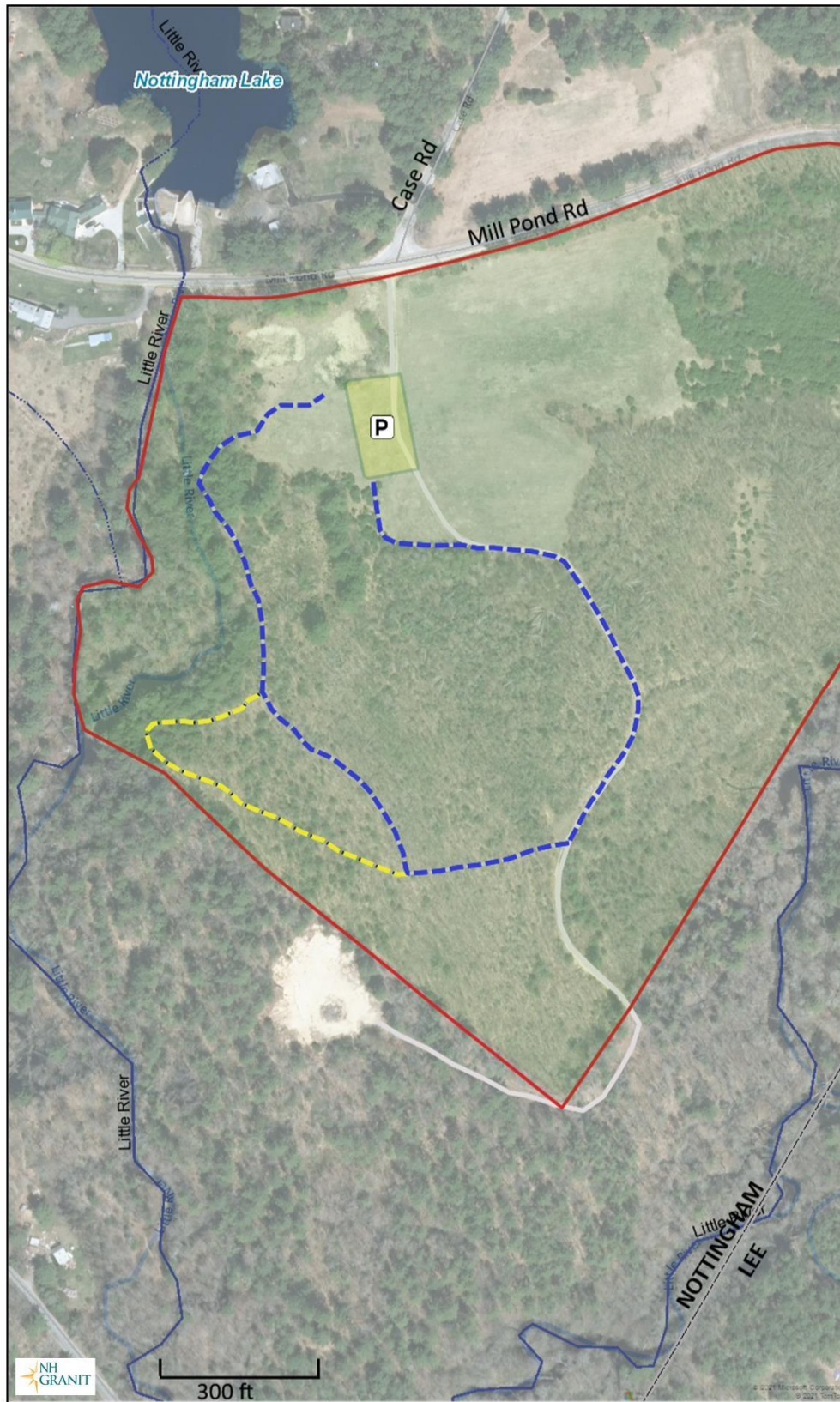
Conservation: The Little River, a tributary to the Wild and Scenic Lamprey River, is a state-designated river under the NH Rivers Management and Protection act. The NH Wildlife Action Plan classifies much of the grassland area of the Marston Farm as Highest Ranked Wildlife Habitat in NH, with the riverside habitat and adjacent wetlands as Highest Ranked in the Region.

Trails: The easy Little River and Overlook trails wind through 0.6 miles of the property's woodland habitats and along the edge of the fields near the parking area. The Overlook Trail ascends a sandy knoll with a view of the river at its western point. The trails are available year-round for low-impact educational and recreational activities such as walking, snowshoeing, and cross-country skiing. Motorized vehicles are not permitted. Please leash your dog; bag and carry out waste and trash. The banks down to the river on the west and east sides of the property are steep. Please view these areas from the trail for your safety and to avoid causing erosion into this sensitive habitat. Part of the trail is along an old access road to an off-property sand pit. Please respect the No Trespassing signs where the road leaves the property in the southeast corner.

Directions:

The entrance to Marston Farm is on the south side of Mill Pond Road, opposite the intersection with Case Road, approximately 0.5 miles east of Smoke Street and 0.8 miles west of NH Rt 125. A gravel parking lot is available a short distance south of the entrance and is plowed during the winter.

Marston Farm Recreation Area Trails



Legend

- Access road
- - - Little River Trail
- - - Overlook Trail

Trail length 0.6 mi

Map Scale
1: 3,247



© NH GRANIT, www.granit.unh.edu
Map Generated: 12/10/2021

Notes

