

EVERSOURCE

PROPRIETARY INFORMATION: The material contained on the Overhead Distribution Circuit Map shall be considered proprietary to Eversource Energy, and Users (which shall be defined as any person or entity who has received the map through sale, purchase, exchange, gift, or otherwise) shall keep it in confidence and shall not furnish or disclose it to any third party without the prior written permission of Eversource Energy.

OH Primary: the circuit

- OH Primary: the circuit
- Lateral
- Backbone

OH Primary: other circuits

- Lateral
- Backbone

UG Primary

- UG Primary
- UG Backbone
- UG Lateral
- Substation
- Poles

Other Symbols

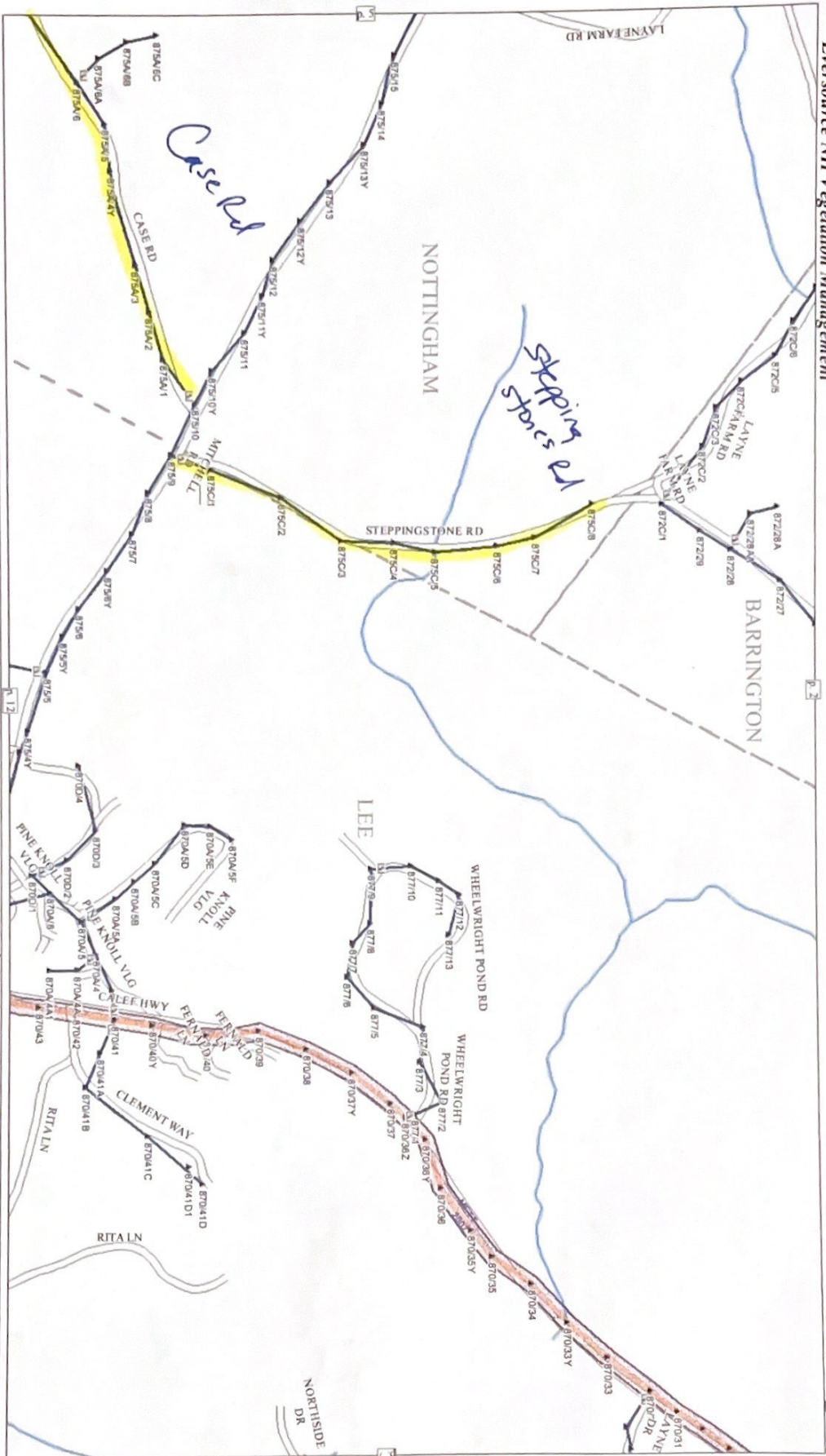
- M Primary Means
- PC Repeater
- SB Spanish Bank
- Open Point
- Circuit
- Sequon Bank
- % Tegment
- Streams
- Right of Way
- METT
- 2012 Schedules LTT
- Streets
- Town Boundaries

Circuit Mileage	
METT	11.22
ETT	0.00
ROW	0.06
Not Specified	56.63
Total	67.92

Location Information

Circuit: 3115X12_65
 Division: NH EASTERN
 District: EPPING

Plotted: 2/22/2022



EVERSOURCE

PROPRIETARY INFORMATION: The material contained on the Overhead Distribution Circuit Map shall be considered proprietary to Eversource Energy, and Users (which shall be defined as any person or entity who has received the map through sale, purchase, exchange, gift, or otherwise) shall keep it in confidence and shall not furnish or disclose it to any third party without the prior written permission of Eversource Energy.

OH Primary: this circuit

- OH Primary: this circuit
- Lateral
- Backbone
- OH Primary: other circuits
- Lateral
- Backbone

UC Primary

- UC Primary
- UC Backbone
- UC Lateral
- UC Substation
- UC Poles

Other Symbols

- Primary Meters
- Rec Backbar
- Switch Bank
- Open Point
- Cutout
- Right of Way
- 2022 Scheduled ETT
- Streets
- Town Boundaries
- Streams
- % Terpoint

Circuit Mileage

METT	5.21
ETT	0.00
ROW	0.00
Not Specified	48.05
Total	53.26

Location Information

Circuit: 3137X1_65
 Division: NH EASTERN
 District: EPPING

Page: 6 of 41

Printed: 2/22/2022



EVERSOURCE

PROPRIETARY INFORMATION: The material contained on the Overhead Distribution Circuit Map shall be considered proprietary to Eversource Energy, and Users (which shall be defined as any person or entity who has received the map through sale, purchase, exchange, gift, or otherwise) shall keep it in confidence and shall not furnish or disclose it to any third party without the prior written permission of Eversource Energy.

OH Primary: this circuit

- OH Primary: this circuit
- Lateral
- Backbone

OH Primary: other circuits

- Lateral
- Backbone

UG Primary

- UG Primary
- UG Backbone
- UG Lateral
- Solution
- Poles

Primary Meters

- Primary Meters
- Backdoor
- Switch Bank

Open Point

- Open Point
- Circuit
- 2022 Scheduled ETT
- Streams
- Streams
- Town Boundaries

Circuit Mileage

METT	5.21
ETT	0.00
ROW	0.00
Not Specified	48.05
Total	53.26

Ü

Page: 9 of 41

Location Information

Circuit: 3137X1_65
 Division: NH EASTERN
 District: EPPING

Printed: 2/22/2022



EVERSOURCE

PROPRIETARY INFORMATION: The material contained on the Overhead Distribution Circuit Map shall be considered proprietary to Eversource Energy, and Users (which shall be defined as any person or entity who has received the map through sale, purchase, exchange, gift, or otherwise) shall keep it in confidence and shall not furnish or disclose it to any third party without the prior written permission of Eversource Energy.

OH Primary: 11k circuit

- OH Primary: Lateral
- OH Primary: Backbone
- OH Primary: other circuits

UC Primary

- UC Primary
- UC Backbone
- UC Lateral
- UC Situation

Primary Meters

- Primary Meter
- Switch Bank

Open Point

- Open Point
- Count
- Spread Bank
- Terpoint
- Stream

Right of Way

- Right of Way
- METT
- 2021 Scheduled ETT
- Streets
- Town Boundaries

Circuit Mileage

METT	5.21
ETT	0.00
ROW	0.00
Not Specified	48.05
Total	53.26

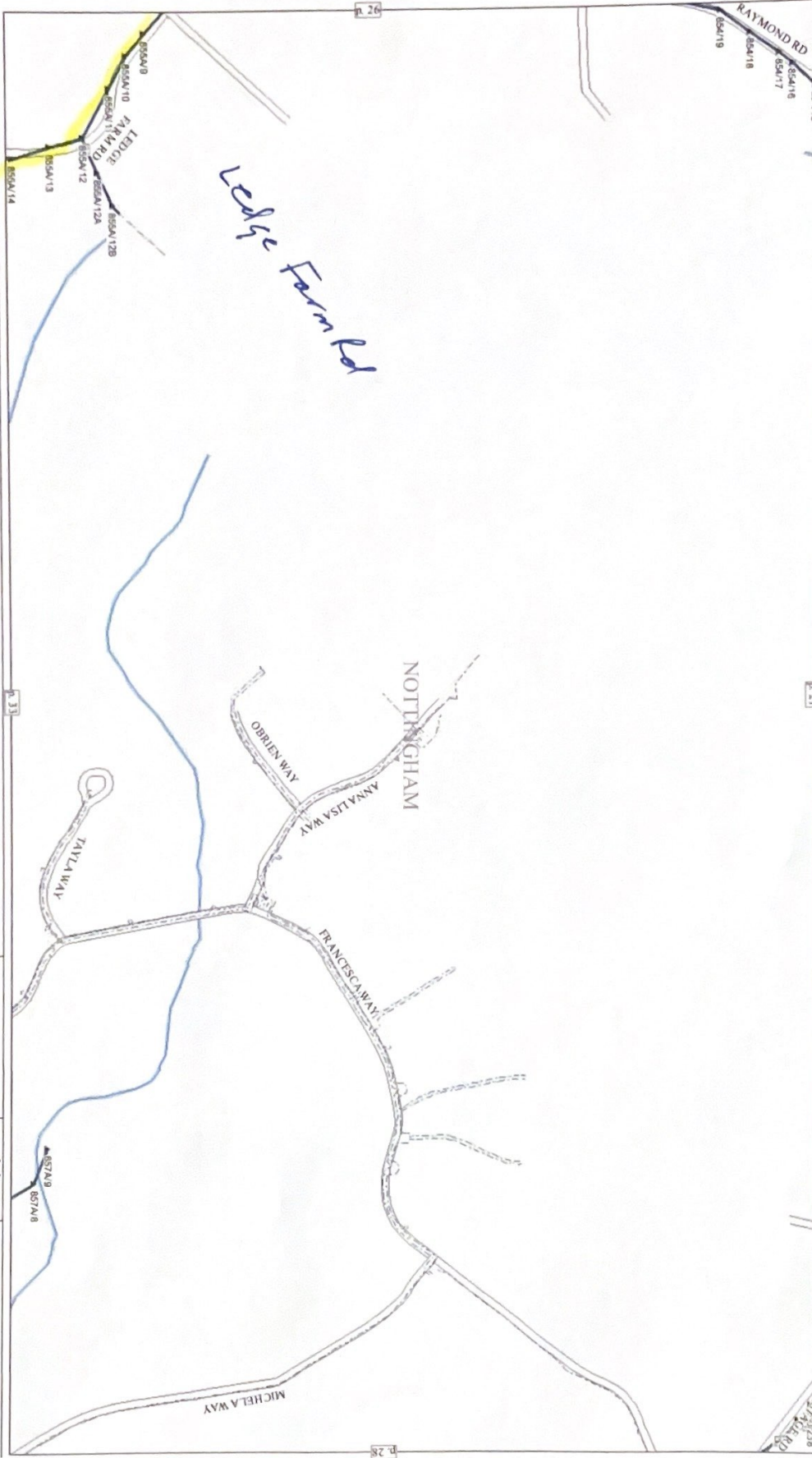
U

Page: 26 of 41

Location Information

Circuit: 3137X1_65
 Division: NH EASTERN
 District: EPPING

Plotted: 2/22/2022



EVERSOURCE

PROPRIETARY INFORMATION: The material contained on the Overhead Distribution Circuit Map shall be considered proprietary to Eversource Energy, and Users (which shall be defined as any person or entity who has received the map through sale, purchase, exchange, gift, or otherwise) shall keep it in confidence and shall not furnish or disclose it to any third party without the prior written permission of Eversource Energy.

OH Primary: this circuit

- Lateral
- Backbone

OH Primary: other circuits

- Lateral
- Backbone

UC Primary

- UC Primary
- UC Backbone
- UC Lateral

Substation

- Substation
- Poles

Primary Means

- Ⓜ Primary Means
- Ⓡ Recloser
- Ⓢ Switch Bank

Open Point

- Open Point
- Cutout
- Ⓢ Sapsdown Bank
- Ⓢ Tripunit
- Streams

Right of Way

- ▭ Right of Way
- ▭ METT
- ▭ 2022 Scheduled ETT
- ▭ Streets
- ▭ Down Boundaries

Circuit Mileage

METT	5.21
ETT	0.00
ROW	0.00
Not Specified	48.05
Total	53.26

U

Page: 27 of 41

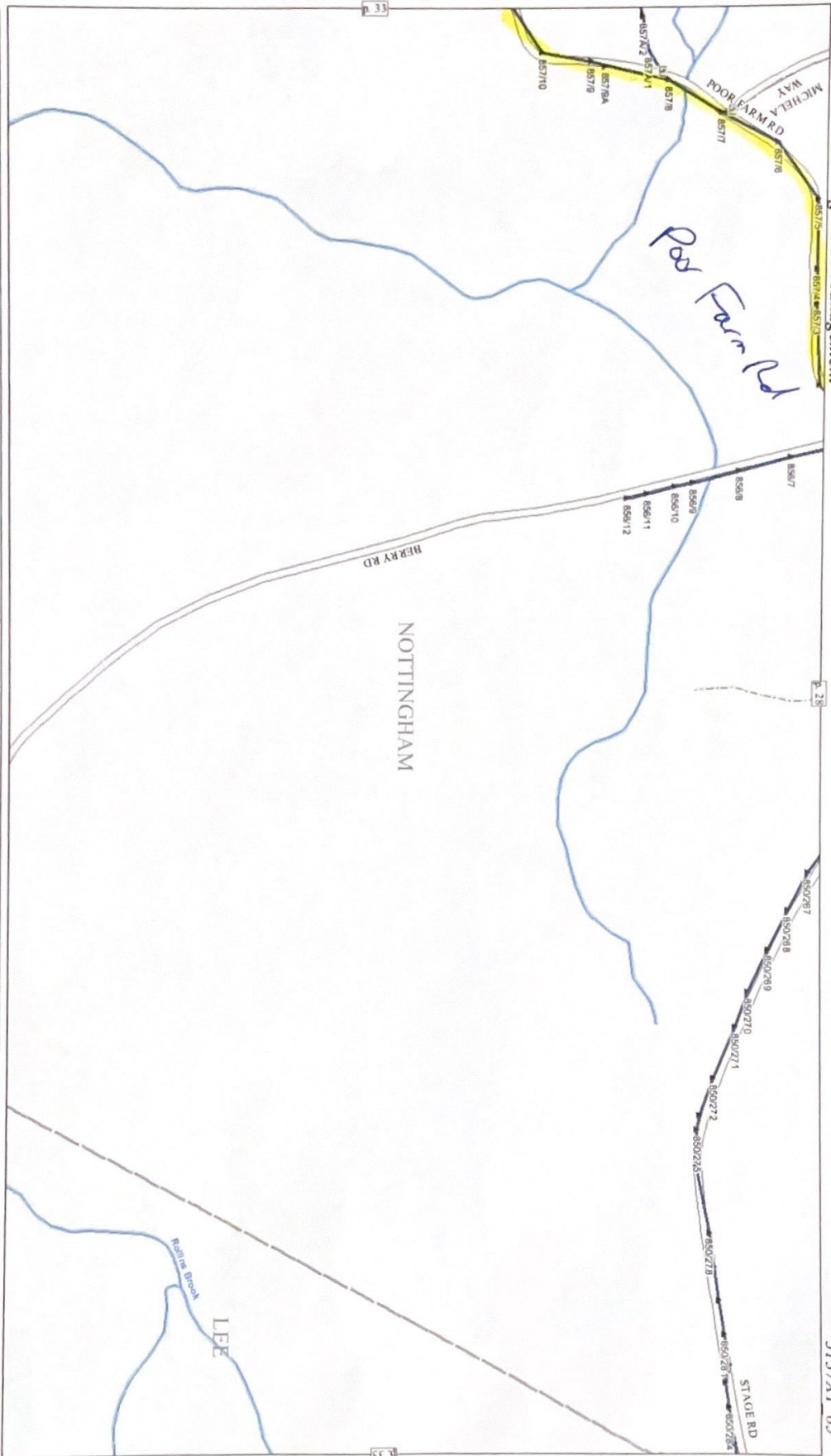
Location Information

Circuit: 3137X1_65
 Division: NH EASTERN
 District: EPPING

Plotted: 2/22/2022

Eversource NH Vegetation Management

3137X1 65



EVERSOURCE

PROPRIETARY INFORMATION: The material contained on the Overhead Distribution Circuit Map shall be considered proprietary to Eversource Energy, and Users (which shall be defined as any person or entity who has received the map through sale, purchase, exchange, gift, or otherwise) shall keep it in confidence and shall not furnish or disclose it to any third party without the prior written permission of Eversource Energy.

OH Primary: this circuit

- OH Primary: this circuit
- Lateral
- Backbone

OH Primary: other circuits

- Lateral
- Backbone

UG Primary

- UG Primary
- UG Backbone
- UG Lateral
- Substation
- Poles

Other Symbols

- Primary Meter
- Recloser
- Switch Bank
- Open Point
- Cause
- Sequencer Bank
- Teipoint
- Sirens
- Right of Way
- METT
- 2022 Scheduled ETT
- Street
- Town Boundaries

Circuit Mileage

METT	5.21
ETT	0.00
ROW	0.00
Not Specified	48.05
Total	53.26

U

Page: 34 of 41

Location Information

Circuit: 3137X1 65
 Division: NH EASTERN
 District: EPPING

Printed: 2/27/2022